



MIDLITE®

QUALITY CUSTOM PRODUCTS

THEATER • TELECOM • WIRED DEVICES • POWER SOLUTIONS

Midlite Corporation

P.O. Box 70189
North Dartmouth, MA 02747

Tel. 508.676.5169 / Toll Free 800.606.5169 / Fax 508.861.0105

www.midlite.com



HOME STYLE SOLUTIONS

tel 508.676.5169 / toll free 800.606.5169 / fax 508.861.0105

www.midlite.com

We are growth oriented:

We continue to innovate and develop unique custom products, hold patent positions and leverage the patents into new applications. We provide competitive pricing by outsourcing manufacturing locally and abroad. Our customers are supported by well-organized and managed warehousing. Regardless the size of your distribution or order fulfillment needs we can maintain inventory levels to meet your demand through our growing distribution network

Business Principles:

We believe that distributors' who do business strictly on price and margin and not consider the product quality and design features eventually will end with the least desired products and profit margins. And in the end, will have a harder time differentiating themselves from the competition and become less competitive and less likely to grow.

This edict has guided MIDLITE to follow these business principles:

1. Lead in innovative product design
2. Establish competitive pricing based on value versus utility, not by being the least expensive.
3. Design products that differentiate the MIDLITE brand from the competition
4. Strive for product excellence
5. Focus continuous improvement on all aspect of business
6. Manufacture quality products, and most important
7. Provide more value in our product design and services than the competition.

Business Charter and Responsibility:

Our business charter is to deliver quality innovative products at a great value that are easy to install, provide flexibility in the field, that make the installation aesthetically pleasing, brand MIDLITE to product quality, and of course to save the installer money in labor and material content.

Environmental Responsibility:

We design products with an "environmentally conscious being" by recognizing the features of a product application and designing them with engineering integrity and with the least material content possible. We believe over-sized products in any product category that consume excess components, plastic and metal are not better but wasteful. Help us bring environmental consciousness to the markets we serve by buying MIDLITE's products.

TABLE OF CONTENTS

IN-WALL POWER SOLUTIONS	
Décor Power Jumper™ Kit	4
Overmolded IEC Power Inlet Kit	4
Overmolded Décor Receptacle Kit	5
Décor In-Wall Power Components	5



POWER RELOCATION & CABLE MANAGEMENT	
Power Jumper™ HDTV Power Relocation Kit	6
Décor Brush Plate	6
Pocket Plate™ All-in-One Power Relocation Kit	7
Pocket Plate™ Components	7
Single Gang Décor In-Wall Power HDTV Solution Kit	8
Décor In-Wall Power Components	8
Double Gang Décor In-Wall Power HDTV Solution Kit	9
Décor Recessed Receptacle Hi-Low Kit and Décor Wireport™ Plate	9
Décor Recessed Receptacle Hi-Low Kit	9
Power+Port™ HDTV Power Solution	10
Power+Port™ HDTV Power Solution Components	10
Power+Port™ Recessed Receptacle Hi-Low Kit	11
Power+Port™ Recessed Receptacle Hi-Low Kit and Wireport™ Plate with Grommet	11



IN-WALL CABLE MANAGEMENT	
Wireport™ Wall Plates	12
Duplex Receptacle and Wireport™ with Grommet	12
Wireport™ Wall Plates with Grommet	13
SplitPort™ Wall Plates	14
SplitPort™ Wall Plates	14
Cable Vent™ Recessed Reversible Wall Plate	15
Custom 360° Right Angle HDMI Adaptor and Wall Plate	15



CUSTOM METAL WALL PLATES	
Metal Wireport™ and SplitPort™ Plates	16
Metal Recessed Receptacle	17



FASTENERS AND HARDWARE	
Steel Safety Plates	17
2 1/2" Wall Plate Breakaway Screws	17



CABLE SLEEVING & CONDUIT	
Wire Braided Wrap Sleeving	18
Pli-Flange Cable Sleeving	19
CableThru Corrugated Conduit	19
CableThru Flex Conduit Liquid Seal	19
Hot Knife	18

Smart Strip

- Seven outlets work together, autoswitching your devices on/off automatically, to save you money on your electric bill.
- 1225 joules of surge protection keep your equipment safe from even the harshest power spikes
- Conveniently-spaced outlets and a 45-degree angled space saver plug make the Smart Strip a friendly addition to your electronic systems
- Plug your HDTV flat panel into the blue "Control" outlet and your A/V gear into the white "Automatically Switched" outlets. When the HDTV is turned on, the "Automatically Switched" outlets are energized. Powering the HDTV off completely cuts power to the "Automatically Switched" outlets. Plug in devices you do not want to turn off such as a DVR, cable box or satellite receiver to the "Constant Hot" outlets.
- 1225 joules of surge protection keep your equipment safe from even the harshest power spikes

Power Adapter Cord		
Part No.	Color	Length
SCG5	White	6'

**In-Line Surge and Lightning Suppressor with RFI Filtering**

- 1575 joules of protection, one of the highest ratings in its class!
- The 6' cord is long enough for joining TV arms and front projects applications and is equally concealed behind HDTV equipment
- Shields your equipment from lightning, utility company surges, and fluctuations and with RFI filter picture enhancement
- Available adaptor compatible with any flat panel power cord connector
- UL Certified E333575

In-Line Surge and Lightning Suppressor			
Part No.	Color	Length	Joules
120-6B	Black	6'	1575

**Power Cord Adapter**

- Adapter Cord designed to fit MIDLITE's 120-6B when used on a Slim Line TV and other female 3-prong plugs that do not have a removable IEC outlet on the back like some of PC's to power printers, monitors, and other 120VAC devices.
- 1' in length and can handle 10 amperes maximum

Power Cord Adapter		
Part No.	Color	Length
1AIEC	Black	1'



Power Jumper™

HDTV Power Relocation Kit

- Easily relocate power behind the wall to your flat panel
- Cable is pre-wired and requires no electrical wiring by the installer

Décor Power Jumper™ with Mounting Brackets

Part No.	Color
PJW-7R2	White

Kit includes:

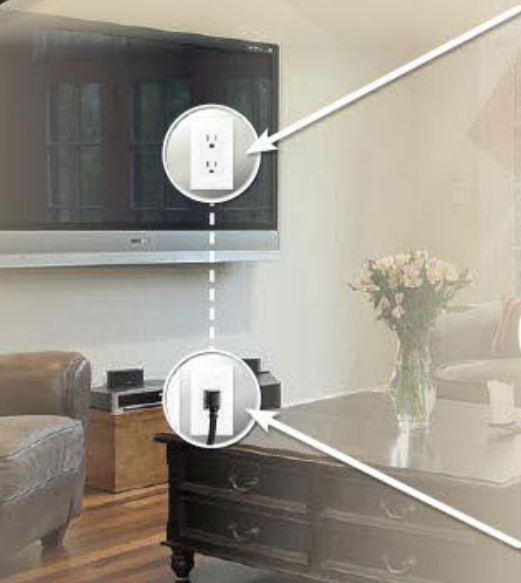
- 7 ft. Pre-wired Premise Powered Power Feed (qty 1)
- 1-Gang Low Voltage Mounting Bracket (qty 2)
- 6 ft. Right Angle IEC 60320 CY13 to NEMA 5-13P Cord Set (qty 1)
- Décor Wall Plate (qty 2)

Décor Power Jumper™

Part No.	Color
PJW-7R	White

Kit includes:

- 7 ft. Pre-wired Premise Powered Power Feed (qty 1)
- 6 ft. Right Angle IEC 60320 CY13 to NEMA 5-13P Cord Set (qty 1)
- Décor Wall Plate (qty 2)



Pre-wired - No Wiring Required

- Mounts to Recessed Low Voltage Brackets
- NEC Code Compliant
- ETL listed, UL Rated 817, CSA# 22.2#21



PJW-7R2



PJW-7R



Kits also available with Metal-Clad Wiring



Kit includes:

- 7 ft. Metal Clad Pre-wired Premise Powered Power Feed (qty 1)
- 1-Gang Low Voltage Mounting Bracket (qty 2)
- 6 ft. Right Angle IEC 60320 CY13 to NEMA 5-13P Cord Set (qty 1)
- Décor Wall Plate (qty 2)

PJW-7R2-MC

Kit includes:

- 7 ft. Metal Clad Pre-wired Premise Powered Power Feed (qty 1)
- 6 ft. Right Angle IEC 60320 CY13 to NEMA 5-13P Cord Set (qty 1)
- Décor Wall Plate (qty 2)

PJW-7R-MC

Overmolded Décor Receptacle Kit

- Provide remote power and utilize shallow depth installation with the Midlite® Overmolded Décor Receptacle
- The décor receptacle wall plate fits flush to wall, typically used in AV and appliance applications such as Flat Screen TVs and Projectors
- Installs into a standard 14 cu. inch or larger electrical box
- 120 Vac, 15 Amp, 60 Hz.
- ETL Listed - UL and CSA Rated

Overmolded Décor Receptacle and Décor Wall Plate w/ screw hardware

Part No.	Color
OM52D	White

Kit includes:

- Overmolded Décor Receptacle with 6" NM-B 14-13 Pigtail (qty 1)
- Wall Plate w/ screw hardware (qty 1)



OM52D



Easily gang together with multi-gang wall plate.

Pre-wired 6" pigtail



Overmolded IEC Power Inlet Kit

- Provide remote power and surge protection to your wall mounted HDTV
- The IEC wall plate fits flush to wall, typically used in AV and appliance applications such as Flat Screen TVs and Projectors
- Installs into a standard 14 cu. inch or larger electrical box
- 120 Vac, 15 Amp, 60 Hz.
- ETL Listed - UL and CSA Rated

Overmolded IEC Power Inlet with Décor Wall Plate & 6 ft Right Angle Power Cord

Part No.	Color
IEC-46W-6RA	White

Kit includes:

- Overmolded Power Inlet with 6" NM-B 14-13 Pigtail (qty 1)
- 6 ft. Right Angle Power Cord (qty 1)
- Wall Plate w/ screw hardware (qty 1)



*Kits can be ordered with 14-2 Romex. Specify length with 6, 8, or 10 ft. at end of part number



IEC-46W-6RA

Pre-wired 6" pigtail



Décor In-Wall Power Components

Overmolded IEC Power Inlet and Décor Wall Plate w/ screw hardware

Part No.	Color
IEC-46W	White



IEC-46W



- The IEC wall plate fits flush to wall, typically used in AV and appliance applications such as Flat Screen TVs and Projectors
- Installs into a standard 14 cu. inch or larger electrical box
- 120 Vac, 15 Amp, 60 Hz. • 6" NM-B 14-13 Pigtail
- ETL Listed - UL and CSA Rated

Additional Accessories

Part No.	Description
B114R	1-Gang Retro Work PVC box
LV1	1-Gang Low Voltage Mounting Bracket
LVDR2	2-Gang Dual Voltage Retro Work PVC Box
NMSK	Non-Metallic Splice Kit
6RA	6 ft. Right Angle Power Cord



LV1



LVDR2



6RA 6 ft.



NMSK



B114R

Power Jumper™

HDTV Power Relocation Kit

Easily relocate power & A/V cables to your wall mounted HDTV

- Power is recessed for snug to the wall flat panel installation
- Use a remote surge protector with the kit to protect your HDTV
- Pre-wired - no electrician required
- Wiring is concealed within wall • Power Rating 15A, 125V
- Meets NEC Code • UL 817, CSA#22.2#21

22APJW-7R



Power Jumper HDTV Power Relocation Kit		
Part No.	Color	Recessed Depth
22APJW-7R	White	1.5"

Kit includes:

- 7' Pre-wired Premise Powered Power Feed (qty 1)
- 2-Gang Recessed Boxes (qty 2)
- 2-Gang Frames (qty 2)
- Décor Brush Plates (qty 2)
- 6 ft. Right Angle IEC 60320 CY13 to NEMA 5-13P Cord Set (qty 1)

Décor Brush Plate

- Offers a clean on-wall cable management pass through
- Used where A/V cables pass through the wall such as behind flat panel HDTVs and head end A/V gear
- By eliminating the connectors at the wall, the installer reduces labor and material costs, while improving signal integrity
- Cables can be fed from the floor up and the ceiling down with ease
- Attaches to standard 1-gang or 2-gang low voltage backless boxes

Décor Brush Plate with White Brush

Part No.	Plate Color	Hole Size
DBPWH	White	1.3" W x 2.63" H
DBPB-W	Black	
DBPI-W	Ivory	
DBPLA-W	Light Almond	

Décor Brush Plate with Black Brush

Part No.	Plate Color	Hole Size
DBPBK	White	1.3" W x 2.63" H
DBPB-B	Black	
DBPI-B	Ivory	
DBPLA-B	Light Almond	



DBPBK

DBPWH



Kits also available with Metal-Clad Wiring

Kit includes:

- 22APJW-7R-MC**
- 7' Metal Clad Pre-wired Premise Powered Power Feed (qty 1)
 - 2-Gang Recessed Boxes (qty 2)
 - 2-Gang Frames (qty 2)
 - 2-Gang Décor Brush Plates (qty 2)
 - 6 ft. Right Angle IEC 60320 CY13 to NEMA 5-13P Cord Set (qty 1)

www.midlite.com

POCKET™ All-in-One HDTV Power Relocation Kit

NEW!

The Easiest, Fastest Kit to Install!

- Easiest Installation - 1-Piece Design
- Feed power remotely to your HDTV flat panel and hide cables behind the wall
- Protect HDTV flat panel with remote surge protection near your AV gear and equipment
- Pre-wired - no electrician required
- Perfect for retro-fit construction projects
- 1.5" Recessed depth
- Power Rating 15A, 125V
- Meets NEC Code
- UL 817, CSA#22.2#21



Décor Straps Install From Behind



Fastens with Just 2 Mounting Screws



21APJW-7R

Pocket Plate All-in-One HDTV Power Relocation Kit

Part No.	Color	Recessed Depth
21APJW-7R	White	1.5"
21APJLA-7R	Light Almond	
21APJIV-7R	Ivory	
21APJB-7R	Black	

Kit includes:

- 7' Pre-wired Premise Powered Power Feed (qty 1)
- 2-Gang All-in-One Recessed Boxes (qty 2)
- 2-Gang Décor Brush Plates (qty 2)
- 6 ft. Right Angle IEC 60320 CY13 to NEMA 5-13P Cord Set (qty 1)

Pocket Plate Metal Clad All-in-One HDTV Power Relocation Kit

Part No.	Color	Recessed Depth
21APJW-7R-MC	White	1.5"
21APJLA-7R-MC	Light Almond	
21APJIV-7R-MC	Ivory	
21APJB-7R-MC	Black	

Kits also available with Metal-Clad Wiring

Kit includes:

- 21APJW-7R-MC**
- 7' Metal Clad Pre-wired Premise Powered Power Feed (qty 1)
 - 2-Gang All-in-One Recessed Boxes (qty 2)
 - 2-Gang Décor Brush Plates (qty 2)
 - 6 ft. Right Angle IEC 60320 CY13 to NEMA 5-13P Cord Set (qty 1)

POCKET™ Components

- Use with Standard Décor Straps
- Easy Installation • Only 2 Screws to Service
- Recessed for Low Voltage & Power Jumper Décor Style Devices



2GPP-1W

1GPP-1W

Single Gang Pocket Plate All-in-One Recessed Box/Wallplate Combo

Part No.	Color	Recessed Depth
1GPP-1W	White	1.5"
1GPP-1LA	Light Almond	
1GPP-1IV	Ivory	
1GPP-1B	Black	

Double Gang Pocket Plate All-in-One Recessed Box/Wallplate Combo

Part No.	Color	Recessed Depth
2GPP-1W	White	1.5"
2GPP-1LA	Light Almond	
2GPP-1IV	Ivory	
2GPP-1B	Black	

COLOR SELECTION				
WH	LA	IV	BL	
white	light almond	ivory	black	

tel 508.676.5196 / toll free 800.606.5169 / fax 508.861.0105

In-Wall POWER SOLUTIONS

Easily Hide Power & A/V Cables Behind the Wall

Single Gang Décor In-Wall Power HDTV Solution Kit



A46-W



- Feed power remotely to your HDTV flat panel and hide the cables behind the wall
- Protect HDTV flat panel with remote surge protection near your A/V gear and equipment
- Build your own custom power and low voltage plates
- Perfect for retro-fit construction projects
- Power Rating 15A, 125V, 5 year warranty
- ETL Listed Conforms to UL STD 514D and Certified CSA STD 22.2 42.1-00

Single Gang Décor In-Wall Power Solution Kit, 3 ft Cord

Part No.	Color	Plug Clearance
A46-W-3	White	1.1"
A46-LA-3	Light Almond	1.1"
A46-I-3	Ivory	1.1"
A46-B-3	Black	1.1"

Single Gang Décor In-Wall Power Solution Kit, 6 ft Cord

Part No.	Color	Plug Clearance
A46-W	White	1.1"
A46-LA	Light Almond	1.1"
A46-I	Ivory	1.1"
A46-B	Black	1.1"

Kit includes:

- 1-Gang Décor Recessed Receptacle (qty 1)
- 1-Gang Décor Recessed Power Inlet (qty 1)
- 1-Gang Retro Work Box PVC boxes (qty 2)
- 14 gauge, 15 amp Black Power Cord (qty 1)

*Kits can be ordered with 14-2 Romex. Specify length with 6, 8, or 10 ft. at end of part number



Kits available with 3 ft. or 6 ft. power cable

Décor In-Wall Power Components

Available décor power modules for custom build of wall plates with décor keystone inserts

- Feed power remotely to your HDTV flat panel and hide the cables behind the wall
- Gang together keystone décor plates and build custom plate connector combinations
- Protect HDTV flat panel with remote surge protection near your A/V gear and equipment
- Perfect for retro-fit construction projects • Power Rating 15A, 125V, 5 year warranty
- ETL Listed Conforms to UL STD 514D and Certified CSA STD 22.2 42.1-00

Décor Recessed Receptacle

Part No.	Color	Plug Clearance
4641-W	White	1.1"
4641-LA	Light Almond	1.1"
4641-I	Ivory	1.1"
4641-B	Black	1.1"

Décor Recessed Power Inlet

Part No.	Color	Plug Clearance
4642-W	White	1.1"
4642-LA	Light Almond	1.1"
4642-I	Ivory	1.1"
4642-B	Black	1.1"

Additional Accessories

Part No.	Description
3B	14 gauge, 15 amp 3ft. Black Power Cord
6B	14 gauge, 15 amp 6ft. Black Power Cord
B114R	1-Gang Retro Work PVC Box
LV1	1-Gang Low Voltage Mounting Bracket
LVDR2	2-Gang Dual Voltage Retro Work PVC Box



4641-W

4642-W



B114R

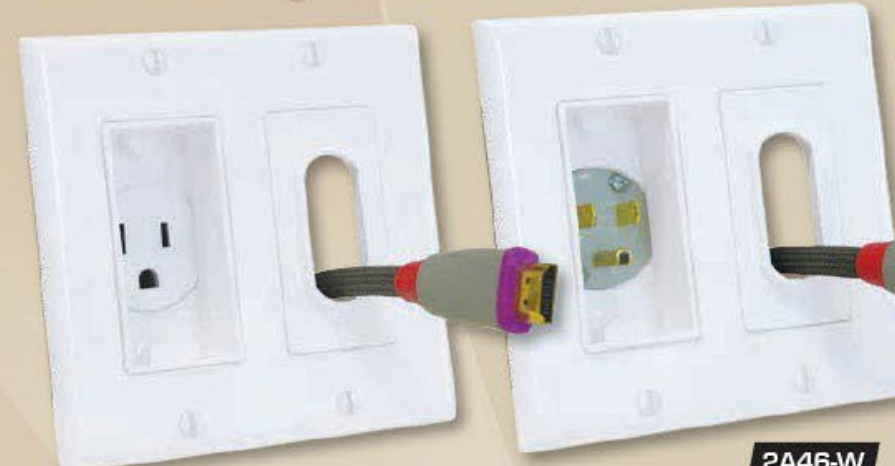
LV1

LVDR2

3B 3 foot

6B 6 foot

Double Gang Décor In-Wall Power HDTV Solution Kit



2A46-W



Combine low voltage and power together in a décor style plate

- Feed power remotely to your HDTV flat panel and hide cables behind the wall
- Gang together keystone décor plates and build your own custom power and low voltage combinations

Double Gang Décor In-Wall Power Solution Kit, 3 ft Cord

Part No.	Color	Plug Clearance
2A46-W-3	White	1.1"
2A46-LA-3	Light Almond	1.1"
2A46-I-3	Ivory	1.1"
2A46-B-3	Black	1.1"

Double Gang Décor In-Wall Power Solution Kit, 6 ft Cord

Part No.	Color	Plug Clearance
2A46-W	White	1.1"
2A46-LA	Light Almond	1.1"
2A46-I	Ivory	1.1"
2A46-B	Black	1.1"

- ETL Listed Conforms to UL STD 514D and Certified CSA STD 22.2 42.1-00
- Perfect for retro-fit construction projects
- Power Rating 15A, 125V, 5 yr warranty



Kits available with 3 ft. or 6 ft. power cable

Kit includes:

- 1-Gang Décor Recessed Receptacle (qty 1)
- 1-Gang Décor Recessed Power Inlet (qty 1)
- Décor-Style Wireport™ Plate (qty 2)
- Double Gang Décor Wall Plate (qty 2)
- 2-Gang Dual Voltage Retro Work boxes (qty 2)
- 14 gauge, 15 amp Black Power Cord (qty 1)

*Kits can be ordered with 14-2 Romex. Specify length with 6, 8, or 10 ft. at end of part number

Décor Recessed Receptacle Hi-Low Kit and Décor Wireport™ Plate

The basic décor style wall plate design to install power behind your flat panel HDTV and pass low voltage cables through the wall from your A/V equipment

Décor Recessed Receptacle Double Gang Kit and Décor Wireport™ Plate

Part No.	Color	Plug Clearance
2A4641-1G-W	White	1.1"
2A4641-1G-LA	Light Almond	1.1"
2A4641-1G-I	Ivory	1.1"
2A4641-1G-B	Black	1.1"

Kit includes:

- 1-Gang Décor Recessed Receptacle (qty 1)
- Décor-Style Wireport™ Plate (qty 2)
- Single Gang Décor Wall Plate (qty 1)
- Double Gang Décor Wall Plate (qty 1)
- 2-Gang Dual Voltage Retro Work PVC box (qty 1)
- 1-Gang Low Voltage Mounting Bracket (qty 1)

2A4641-1G-W



Décor Recessed Receptacle Hi-Low Kit

The basic décor style wall plate design to install power and low voltage cables behind your flat panel HDTV

Décor Recessed Receptacle Double Gang Kit

Part No.	Color	Plug Clearance
2A4641-W	White	1.1"
2A4641-LA	Light Almond	1.1"
2A4641-I	Ivory	1.1"
2A4641-B	Black	1.1"

Kit includes:

- 1-Gang Décor Recessed Receptacle (qty 1)
- Décor-Style Wireport™ Plate (qty 2)
- Double Gang Décor Wall Plate (qty 2)
- 2-Gang Dual Voltage Retro Work PVC boxes (qty 2)

2A4641-W



www.midlite.com

Easily Hide Power & A/V Cables Behind the Wall

Power+Port™ HDTV Power Solution



- Power Rating 15A, 125V, 5 yr warranty
- ETL Listed Conforms to UL STD 514D and Certified CSA STD 22.2 42.1-00

A2GESR-W



Kit includes:

- 2-Gang Splitplate End, Recessed Receptacle and Wireport™ with Grommet (qty 1)
- 2-Gang Splitplate End, Power Inlet and Wireport™ with Grommet (qty 1)
- 2-Gang Dual Voltage Retro Work PVC boxes (qty 2)
- 14 gauge, 15 amp Black Power Cord (qty 1)

*Kits can be ordered with 14-2 Romex. Specify length with 6, 8, or 10 ft. at end of part number



Device power and low voltage can be installed separately for easier installation!

- Feed power remotely to your HDTV flat panel and hide cables behind the wall
- Protect HDTV flat panel with remote surge protection near your A/V gear and equipment
- Plates separate for easy installation of power separate from low voltage cables
- Recessed depth is deepest available
- Perfect for retro-fit construction projects

Power+Port™ Kit – HDTV Power Solution Kit, 3 ft Cord		
Part No.	Color	Plug Clearance
A2GESR-W-3	White	1.4"
A2GESR-LA-3	Light Almond	1.4"
A2GESR-I-3	Ivory	1.4"
A2GESR-B-3	Black	1.4"

Power+Port™ Kit – HDTV Power Solution Kit, 6 ft Cord		
Part No.	Color	Plug Clearance
A2GESR-W	White	1.4"
A2GESR-LA	Light Almond	1.4"
A2GESR-I	Ivory	1.4"
A2GESR-B	Black	1.4"

Kits available with 3 ft. or 6 ft. power cable

In-Wall POWER SOLUTIONS™



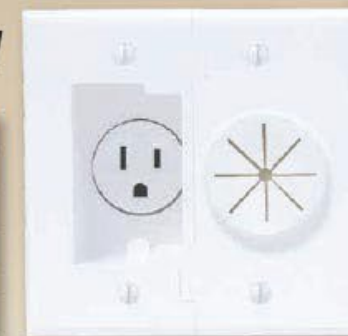
Power+Port™ Recessed Receptacle Hi-Low Kit

- ETL Listed Conforms to UL STD 514D and Certified CSA STD 22.2 42.1-00
- Perfect for retro-fit construction projects
- Power Rating 15A, 125V, 5 year warranty

2A5251-W



Power+Port™ Recessed Receptacle Kit		
Part No.	Color	Plug Clearance
2A5251-W	White	1.4"
2A5251-LA	Light Almond	1.4"
2A5251-I	Ivory	1.4"
2A5251-B	Black	1.4"



Kit includes:

- 2-Gang Splitplate End, Recessed Receptacle and Wireport™ with Grommet (qty 1)
- 2-Gang Dual Voltage Retro Work PVC boxes (qty 1)

Power+Port™ HDTV Power Solution Components

Splitplate Recessed Receptacle, w/screw hardware		
Part No.	Color	Plug Clearance
2GESR-5251-W	White	1.4"
2GESR-5251-LA	Light Almond	1.4"
2GESR-5251-I	Ivory	1.4"
2GESR-5251-B	Black	1.4"

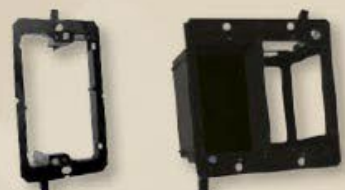
Splitplate Recessed Power Inlet, w/screw hardware		
Part No.	Color	Plug Clearance
2GESR-5266-W	White	1.4"
2GESR-5266-LA	Light Almond	1.4"
2GESR-5266-I	Ivory	1.4"
2GESR-5266-B	Black	1.4"

Splitplate Wireport™ with Grommet, w/screw hardware		
Part No.	Color	Hole Size (Dia.)
2GESP-GR10-W	White	1.425"
2GESP-GR10-LA	Light Almond	
2GESP-GR10-I	Ivory	
2GESP-GR10-B	Black	
		Hole Area (Sq. In.)
		1.59"



- Feed power remotely to your HDTV flat panel and hide cables behind the wall
- Protect HDTVs with remote surge protection near your A/V gear & equipment
- Plates separate for easy installation of power separate from low voltage cables
- Multiple wall plate combinations can be built at the job site
- Recessed depth is deepest available • Perfect for retro-fit construction projects
- ETL Listed Conforms to UL STD 514D and Certified CSA STD 22.2 42.1-00
- Power Rating 15A, 125V, 5 year warranty

Additional Accessories	
Part No.	Description
3B	14 gauge, 15 amp 3ft. Black Power Cord
6B	14 gauge, 15 amp 6ft. Black Power Cord
LV1	1-Gang Low Voltage Mounting Bracket
LVDR2	2-Gang Dual Voltage Retro Work PVC Box



LV1 **LVDR2**



3B 3 ft. **6B** 6 ft.

Power+Port™ Recessed Receptacle Hi-Low Kit and Wireport™ Plate with Grommet

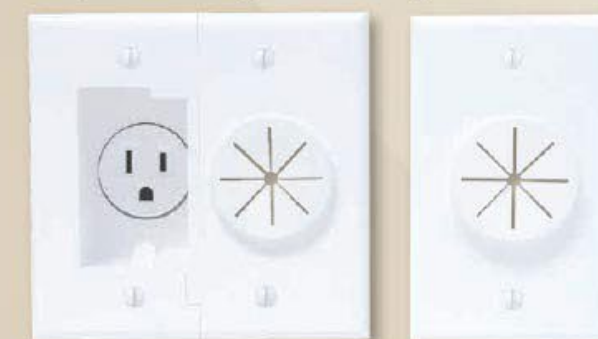
Power+Port™ Recessed Receptacle Kit and Wireport™ Plate with Grommet		
Part No.	Color	Plug Clearance
2A5251-1G-W	White	1.4"
2A5251-1G-LA	Light Almond	1.4"
2A5251-1G-I	Ivory	1.4"
2A5251-1G-B	Black	1.4"

Kit includes:

- 2-Gang Splitplate End, Recessed Receptacle and Wireport™ with Grommet (qty 1)
- 1-Gang Wireport™ Plate with Grommet (qty 1)
- 2-Gang Dual Voltage Retro Work PVC boxes (qty 1)
- 1-Gang Low Voltage Mounting Bracket (qty 1)

The basic Power+Port™ wall plate design to install power and low voltage cables behind your flat panel HDTV and pass low voltage cables through the wall from your A/V equipment.

- Perfect for retro-fit construction projects
- Power Rating 15A, 125V, 5 year warranty
- ETL Listed Conforms to UL STD 514D and Certified CSA STD 22.2 42.1-00



2A5251-1G-W



Wireport™ Wall Plates

- Used where AV cables pass through the wall such as behind flat panel HDTVs and head end AV gear
- By eliminating the connectors at the wall, the installer reduces labor and material costs and improves signal integrity
- Cables can be fed from the floor up and the ceiling down with ease
- Attaches to standard 1-gang and 2-gang low voltage backless boxes
- Sold individually or in master packs of 25

Single Gang Wireport™ w/screw hardware		
Part No.	Color	Hole Size (Dia.)
1GWH	White	1.56"
1GAL	Almond	
1GLA	Light Almond	
1GIV	Ivory	Hole Area (Sq. In.)
1GBK	Black	1.92"
1GBR	Brown	

Double Gang Wireport™ w/screw hardware		
Part No.	Color	Hole Size (Dia.)
2GWH	White	1.8"
2GAL	Almond	
2GLA	Light Almond	
2GIV	Ivory	Hole Area (Sq. In.)
2GBK	Black	2.54"
2GBR	Brown	

Décor-Style Wireport™ w/screw hardware		
Part No.	Color	Hole Size (Dia.)
DC1WH	White	1.8"
DC1AL	Almond	
DC1LA	Light Almond	
DC1IV	Ivory	Hole Area (Sq. In.)
DC1BK	Black	2.54"
DC1BR	Brown	



Wireport™ Wall Plates with Grommet

- Used where AV cables pass through the wall such as behind flat panel HDTVs and head end AV gear
- Attaches to standard 1-gang and 2-gang low voltage backless boxes
- The grommet insert only opens where cabling is present and maintains a closed clean appearance
- Cables can be fed from the floor up or from the ceiling down with ease
- Sold individually or in master packs of 25

Double Gang Wireport™ and Grommet w/screw hardware		
Part No.	Color	Hole Size (Dia.)
2GWH-GR2	White	1.8"
2GAL-GR2	Almond	
2GLA-GR2	Light Almond	
2GIV-GR2	Ivory	Hole Area (Sq. In.)
2GBK-GR2	Black	2.54"
2GBR-GR2	Brown	

Double Gang Grommet		
Part No.	Color	Hole Size (Dia.)
GR2-WH	White	1.8"
GR2-AL	Almond	
GR2-LA	Light Almond	
GR2-IV	Ivory	Hole Area (Sq. In.)
GR2-BK	Black	2.54"
GR2-BR	Brown	

Single Gang Wireport™ and Grommet w/screw hardware		
Part No.	Color	Hole Size (Dia.)
1GWH-GR1	White	1.425"
1GAL-GR1	Almond	
1GLA-GR1	Light Almond	
1GIV-GR1	Ivory	Hole Area (Sq. In.)
1GBK-GR1	Black	1.59"
1GBR-GR1	Brown	

Single Gang Grommet		
Part No.	Color	Hole Size (Dia.)
GR1-WH	White	1.56"
GR1-AL	Almond	
GR1-LA	Light Almond	
GR1-IV	Ivory	Hole Area (Sq. In.)
GR1-BL	Black	1.92"
GR1-BR	Brown	



Duplex Receptacle and Wireport™ with Grommet

- Flexibility to consolidate a standard duplex receptacle into a 1 gang Wireport™ plate
- Locate this combination next to your home theater equipment, ceiling projector, powered subwoofer, public venues where power and video is passed through the ceiling or wall, and small office environments

Duplex Receptacle and Wireport™ with Grommet, w/screw hardware		
Part No.	Color	Hole Size (Dia.)
DR2G-GR10-WH	White	1.425"
DR2G-GR10-LA	Light Almond	
DR2G-GR10-IV	Ivory	Hole Area (Sq. In.)
DR2G-GR10-BK	Black	1.59"

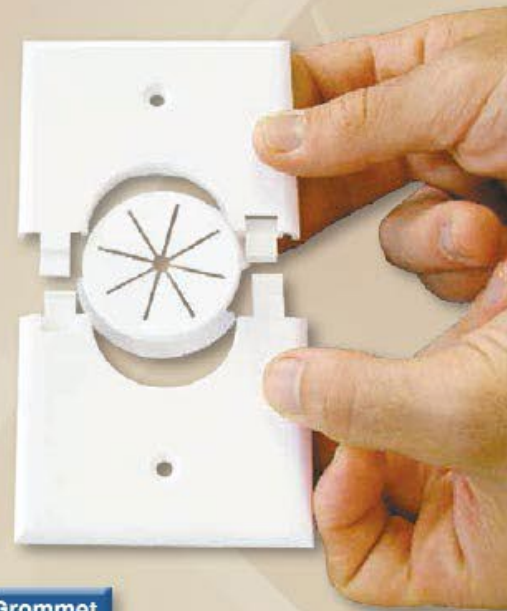
- Mounts directly to a dual voltage electrical box
- Plate is contractor size to cover imperfections in and around the sheet rock area



SplitPort⁺ Wall Plates

- Used where AV cables pass through the wall such as behind flat panel HDTV and head end AV gear
- Contractor size (3.15" w x 4.91" h) wall plate to cover up all surface imperfections surrounding low voltage box edges
- Attaches to standard 1-gang low voltage backless boxes
- Patented keyed-tab feature holds plate together
- Allows easy installation in applications where cabling is already connected to equipment
- The grommet insert only opens where cabling is present and maintains a closed clean area
- Sold individually or in master packs of 25

1GSPWH-GR10



Single Gang SplitPort™ Plus w/screw hardware		
Part No.	Color	Hole Size (Dia.)
1GSPWH	White	1.4"
1GSPLA	Light Almond	Hole Area (Sq. In.) 1.65"
1GSPIV	Ivory	
1GSPBK	Black	

Single Gang SplitPort™ Plus with Grommet w/screw hardware		
Part No.	Color	Hole Size (Dia.)
1GSPWH-GR10	White	1.4"
1GSPLA-GR10	Light Almond	Hole Area (Sq. In.) 1.65"
1GSPIV-GR10	Ivory	
1GSPBK-GR10	Black	



Cable Vent™ Recessed Reversible Wall Plate

- Reversible vent design. Rotate the Cable Vent™ for a front facing or rear facing installation
- Used where AV cables pass through the wall such as behind flat panel HDTVs and head end AV gear
- Attaches to standard 1-gang low voltage backless boxes
- Patented keyed-tab feature holds plate together
- Allows easy installation in applications where cabling is already connected to equipment
- Sold individually or in master packs of 25

1GCV-WH

Single Gang Cable Vent™ Wall Plate, w/screw hardware		
Part No.	Color	Hole Size (Dia.)
1GCV-WH	White	1.48" x 1.12"
1GCV-LA	Light Almond	Hole Area (Sq. In.) 1.65"
1GCV-IV	Ivory	
1GCV-BK	Black	



Cable Vent™ Plates are patent pending (other patents apply)



SplitPort Wall Plates

- Used where AV cables pass through the wall such as behind flat panel HDTV and head end AV gear
- Attaches to standard 1-gang low voltage backless boxes
- Patented keyed-tab feature holds plate together
- Allows easy installation in applications where cabling is already connected to equipment
- Sold individually or in master packs of 25



Single Gang SplitPort™ w/screw hardware		
Part No.	Color	Hole Size (Dia.)
1GSWH	White	1.4"
1GSAL	Almond	Hole Area (Sq. In.) 1.65"
1GSLA	Light Almond	
1GSIV	Ivory	
1GSBK	Black	
1GSBR	Brown	

Double Gang SplitPort™ w/screw hardware		
Part No.	Color	Hole Size (Dia.)
2GSWH	White	1.8"
2GSAL	Almond	Hole Area (Sq. In.) 2.54"
2GSLA	Light Almond	
2GSIV	Ivory	
2GSBK	Black	
2GSBR	Brown	



2GSWH

1GSWH

Custom 360™ Right Angle HDMI Adaptor and Wall Plate

Custom 360™ Right Angle HDMI Adaptor and Wall Plate Kit w/screw hardware	
Part No.	Color
A360HDMI-WH	White
A360HDMI-LA	Light Almond
A360HDMI-IV	Ivory
A360HDMI-BK	Black

Custom 360™ Right Angle HDMI Adaptor	
Part No.	Color
C360A-7-WH	White
C360A-7-LA	Light Almond
C360A-7-IV	Ivory
C360A-7-BK	Black

Custom 360™ HDMI Wall Plate Kit w/screw hardware	
Part No.	Color
HDMI-1GWH	White
HDMI-1GLA	Light Almond
HDMI-1GIV	Ivory
HDMI-1GBK	Black

- Custom adaptor rotates 360° in increments of 45° to align connector with cable path
- Adaptor is gangable to fit two in a single HDMI-1GXX plate for "an in the field solution" and minimize inventory carrying cost
- Connector and Cable HDMI 1.3a Certified, UL CL3 rated cable for in wall use



A360HDMI-WH



C360A-7-WH



HDMI-1GWH



Align connector with cable path and minimize strain relief at the interconnect!

- Field tested to be used in applications up to 11 meters. Supported resolution 480p, 720p, 1080i, and 1080p
- Incorporates SplitPlate™ patented wall plate design with snap fit connection
- Contractor size (3.15" w x 4.91" h) wall plate to cover up all surface imperfections surrounding low voltage box edges
- Sold individually or in master packs of 25

Custom 360™ HDMI Wall Plate™ are patented

Metal Wireport™ and SplitPort™ Plates

- Midlite's® industrial metal plates are used where AV cables pass through the wall such as behind HDTV flat panels and head end AV gear
- By eliminating the connectors at the wall, the installer reduces labor and material costs and improves signal integrity
- Cables can be fed from the floor up and the ceiling down with ease • They are perfect for new and retrofit applications
- Plates are made of stainless steel or metal with with a powder coat finish

1-Gang Metal Wireport™ Plates

- Attaches to standard 1-gang low voltage backless box
- Includes 1" feed-thru opening with Black grommet



Single Gang Metal Wireport™ w/screw hardware		
Part No.	Color	Hole Size (Dia.)
M1GWH	White	1"
M1GIV	Ivory	Hole Area (Sq. In.) .785"
M1GS	Stainless Silver	

1-Gang Metal SplitPort™ Plates

- Attaches to standard 1-gang low voltage backless box
- Includes 1" feed-thru opening with Black grommet



Single Gang Metal Wireport™ w/screw hardware		
Part No.	Color	Hole Size (Dia.)
M1GSWH	White	1"
M1GSIV	Ivory	Hole Area (Sq. In.) .785"
M1GSS	Stainless Silver	

2-Gang Metal Wireport™ Plates

- Attaches to standard 2-gang low voltage backless box
- Includes 1.625" feed-thru opening with Black grommet

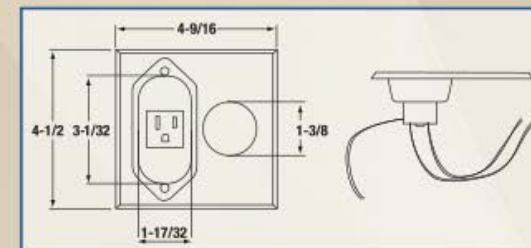


Single Gang Metal Wireport™ w/screw hardware		
Part No.	Color	Hole Size (Dia.)
M2GWH	White	1.4"
M2GS	Stainless Silver	1.65"

Metal Recessed Receptacle

- Use Midlite's® innovative 125V, 15 amp recessed receptacle to install power and low voltage cables behind your flat panel TV and audio & video devices
- Provides an affordable power solution for wall mounted HDTV flat panels
- Perfect for new and retrofit applications
- UL recognized Receptacle. Meets National Electric Code requirements
- Cables can be fed from the floor up and the ceiling down with ease
- For use with 2-gang dual voltage box (old work or new work)
- Plates are made of stainless steel or metal with a powder coat finish
- Includes 1.375" feed-thru opening with Black grommet

Double Gang Metal Recessed Receptacle, w/screw hardware		
Part No.	Color	Hole Size (Dia.)
M5251W	White	1.375"
M5251SS	Stainless Silver	Hole Area (Sq. In.) 1.484"



Steel Safety Plates

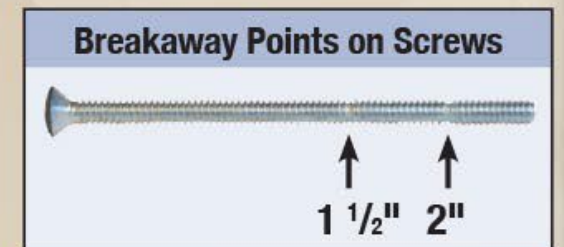
- Steel Safety Plates help protect cabling from dry wall nails and screws. (L 2 3/4" W 1 1/2")
- Available individually or in master packs of 100

Steel Safety Plates	
Part No.	Color
SP100	Steel



2 1/2" Wall Plate Breakaway Screws

- One screw you can service 2 1/2", 2", and 1 1/2" depths
- Use a pair of pliers and your hands to break at the various depths
- Save time on mounting plates to different splash board, baseboard, and wall depths
- Sold in both master packs of 10 boxes of 100 screw per color or individual boxes of 100 screws



2 1/2" Breakaway Screws, Flat Head		2 1/2" Breakaway Screws, Phillips Head	
Part No.	Color	Part No.	Color
212SWB	White	212SWB-P	White
212SAB	Almond	212SAB-P	Almond
212SIB	Ivory	212SIB-P	Ivory
212SBB	Black	212SBB-P	Black

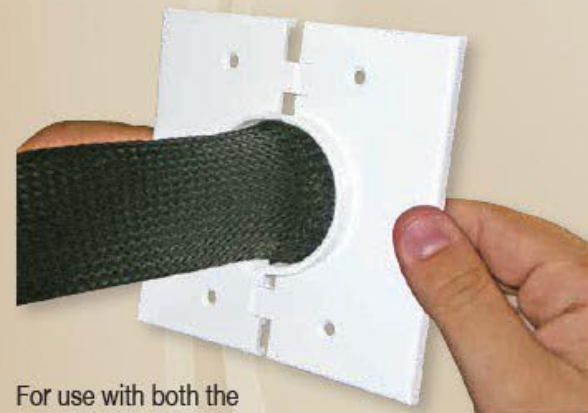


Wire Braided Wrap Sleeving

- Use the Wire Braided Wrap or Wire Braided Wrap Split for managing and hiding cables exiting the Wireport™ and Splitport™ plate or any hole which cables pass through.
- The aesthetically pleasing sleek look is combined with the properties of a 10 mil PET braided construction which makes this product rugged to withstand cuts, abrasions, and tension.
- Use this product where cables exit the wall and need to be managed for an uncluttered clean appearance.
- The cables are completely covered in the cable management application.
- The sleeving cuts easily with a hot knife for a clean edge.
- The Wire Braided Wrap Split incorporates a lateral split which allows the tube to open up to accommodate a wide variety of bundling requirements, and the semi-rigid braid configuration simply closes around the entire installation without the need for any additional fasteners. The 25% edge overlap (at nominal diameter) allows coverage around cables.
- The Wire Braided Wrap Split will bend to a tight radius without distorting or splitting open

Black Wire Braided Wrap Sleeving		
Part No.	Color	Size
PET50-BK	Black	1/2" Dia. x 100'
PET75-BK	Black	3/4" Dia. x 75'
PET100-BK	Black	1" Dia. x 65'
PET150-BK	Black	1 1/2" Dia. x 40'
PET200-BK	Black	2" Dia. x 50'

Black Wire Braided Wrap Split Sleeving		
Part No.	Color	Size
PF6-50-BK	Black	1/2" Dia. x 100'
PF6-75-BK	Black	3/4" Dia. x 75'
PF6-100-BK	Black	1" Dia. x 65'
PF6-150-BK	Black	1 1/2" Dia. x 40'
PF6-200-BK	Black	2" Dia. x 50'



For use with both the Wireport™ and SplitPort™ plates



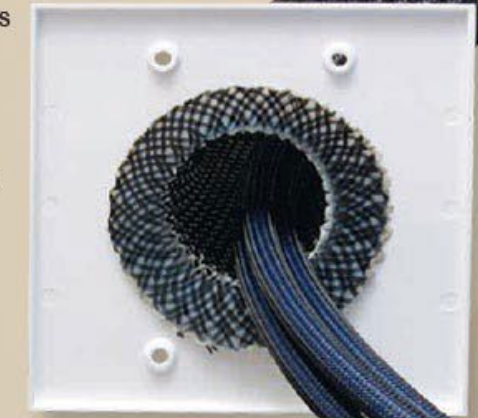
Hot Knife

- Cut braided sleeving to custom lengths on the job
- Provides a melted edge to the braided sleeve end to stop fraying
- UL Listed. 120 Volts, 150 Watts

Black Wire Braided Wrap Sleeving	
Part No.	Color
MD1500	Hot Knife
MD1500-1	Replacement Blades

Pli-Flange™ Cable Sleeving

- Braided sleeving with flange retains sleeve in wall (no tape or wire ties needed)
- Flexible flange is easily inserted and secured within both the Wireport™ and SplitPort™ plates
- Keeps the cables completely covered in the cable management application
- Aesthetically pleasing sleek look is combined with the properties of PET braided construction which makes this product rugged to withstand cuts, abrasions, and tension
- Available in 1 1/4" diameter to fit both the 1-gang Wireport™ and SplitPort™ plates
- Available in 1 3/4" diameter to fit both the 2-gang Wireport™ and SplitPort™ plates



White Pli-Flange™ Cable Sleeving		
Part No.	Color	Size
1PF3-WH	White	1 1/4" Dia. x 3'
1PF5-WH	White	1 1/4" Dia. x 5'
1PF7-WH	White	1 1/4" Dia. x 7'
1PF10-WH	White	1 1/4" Dia. x 10'
2PF3-WH	White	1 3/4" Dia. x 3'
2PF5-WH	White	1 3/4" Dia. x 5'
2PF7-WH	White	1 3/4" Dia. x 7'
2PF10-WH	White	1 3/4" Dia. x 10'

Black Pli-Flange™ Cable Sleeving		
Part No.	Color	Size
1PF3-BK	Black	1 1/4" Dia. x 3'
1PF5-BK	Black	1 1/4" Dia. x 5'
1PF7-BK	Black	1 1/4" Dia. x 7'
1PF10-BK	Black	1 1/4" Dia. x 10'
2PF3-BK	Black	1 3/4" Dia. x 3'
2PF5-BK	Black	1 3/4" Dia. x 5'
2PF7-BK	Black	1 3/4" Dia. x 7'
2PF10-BK	Black	1 3/4" Dia. x 10'

CableThru™ Corrugated Conduit

- Use the CableThru™ Corrugated Conduit for applications such as computer and peripherals, structured cabling, fiber optics, office equipment, and residential/commercial wire protection
- Listed under the Underwriter's Laboratories • CSA Certified by Canadian Standards Association
- Maximum flexibility, can be used in extremely tight quarters
- Resists abuse, pull and crushing • Smooth inside for easier wire pulling
- Light weight, lower installed cost • Outdoor, sunlight resistant
- Integral rigid and flexible PVC construction
- Suitable for use in high vibration or flexing applications

CableThru™ Corrugated Conduit		
Part No.	Color	Size
34CCB	Black	1 3/4" Dia. x 100'
1CCB	Black	1" Dia. x 100'
114CCB	Black	1 1/4" Dia. x 100'
112CCB	Black	1 1/2" Dia. x 50'
2CCB	Black	2" Dia. x 50'



CableThru™ Flex Conduit Liquid Seal

- Use the CableThru™ Flex Conduit Liquid Seal for applications such as Residential/Commercial structured cabling conduit systems, HVAC equipment, Fiber optics, and Machine Tools
- Listed under the Underwriter's Laboratories • CSA Certified by Canadian Standards Association
- Resists corrosion, abrasion, oil, water, acid, metal shavings, and rough environments
- Resists abuse, pull and crushing • Outdoor, sunlight resistant, direct burial
- UL Rating : 80°C dry, 60°C wet, 70°C oil resistant; CSA rating -18°C to 75°C
- Smooth inside for easier wire pulling, no hazardous sharp edges or burrs, will not damage connectors
- Smooth outside for easy pulling of conduit through wall studs, walls and corners - will not snag
- Lightweight and lower installed cost • Quick installation, cuts with utility knife or PVC cutters • Integral rigid and flexible PVC construction

CableThru™ Flex Conduit Liquid Seal		
Part No.	Color	Size
34FCG	Gray	1 3/4" Dia. x 100'
1FB	Gray	1" Dia. x 100'
114FCG	Gray	1 1/4" Dia. x 100'
112FCG	Gray	1 1/2" Dia. x 50'
2FCG	Gray	2" Dia. x 50'

