

SC-600 Series

Preliminary

SC-600 IW (In-Wall) Subwoofer

The SC-600 IW is an affordable in-wall subwoofer that fits flush in a standard 2x4 studded wall yet delivers high output, dynamic bass for music and home theater. The unique four driver design, driven by a perfectly matched 400 watt dynamic power, 200 watt RMS amplifier, reproduces the most demanding home theater, musical or gaming material with incredible authority, accuracy and low distortion.

Features

- Fits FLUSH in a standard 2x4 studded wall
- Easy to install for new construction or retrofit
- Amazingly deep, powerful bass performance with minimum wall vibration
- Full feature IR remote control with presets for four different listening preferences, volume control, phase adjustment and night mode
- Connects with conventional speaker wire
- Comes complete with a compact 16.25" x 14" grille
- The matched SC-600 amp incorporates exclusive Velodyne digital distortion-limiting software, superior headroom, and an automatic 7-band room EQ complete with mic

Four Driver Configuration

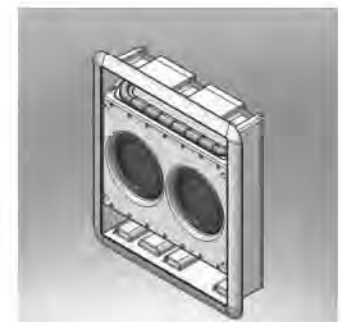
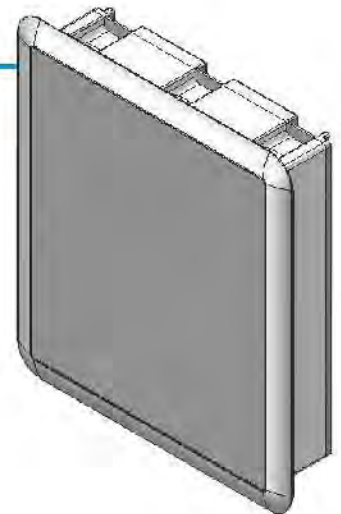
The SC-600 IW incorporates two active long throw, 6.5" drivers with 2" two layer voice coils and two 14" x 3.5" passive radiators in a counterbalanced design that limits wall vibration. This unique approach creates as much bass radiating surface as a 14.5" driver, but fits easily in a 2" x 4" wall with a small 16.5" x 14.25" footprint.

Easy to Install Design

The SC-600 IW features a unique mounting system that accomodates both new construction and retrofit situations. The sealed cabinet attaches to standard 2x4 studs using six drywall screws, three on each side, while the top and bottom of the enclosure are secured to the drywall using four clamps. The perforated, paintable metal grill presses tightly into the cabinet to form a small, low silhouette that virtually disappears into the wall.

Easy to Configure

The SC-600 IW is driven by the SC-600 rack-mountable amplifier that features 400 watts dynamic power and 200 watts of continuous RMS power. The SC-600 is precisely tuned with DSP control, and has a built-in test tone generator, 7-band automatic room equalizer, microphone, 12-volt trigger, IR repeater jack, RS-232 control port (Crestron Certified), and comes with a full feature remote control with four listening presets. The crossover and volume controls, and mic jack for room bass EQ are on the front panel making setup a breeze.



Reliable Class A/B Amplifier

The SC-600 amp uses a proven Velodyne amplifier that's precisely tuned using digital technology to either the SC-600 IW or IF/IC by simply entering the model. With 400 watts dynamic power and 200 watts of continuous RMS power, it guarantees more than enough headroom to reproduce the impact and excitement of the most dramatic special effects and the lowest musical frequencies with detail and definition.

DSP Accuracy

Velodyne's digital DSP technology maximizes usable amplifier power and provides maximum available cone travel without overdriving. The software parameters used in the SC-600 amp are customized for use with either the SC-600 IW or the SC-600 IF/IC, and are selected on the front panel when installing the amplifier. With digital precision, it is possible to achieve the maximum allowable performance from both the amplifier and woofer motor structure without overdriving either. The result is deeper bass extension, bigger impact and less distortion.

Auto-EQ Room Bass Correction

Subwoofer placement in a room can dramatically impact its performance. To assure optimum performance a subwoofer must be tuned and equalized for its room environment and placement. Place the included microphone in the preferred listening position and simply push the "EQ" button on the remote control. The internal signal generator plays a series of tones that are read and analyzed by the DSP which auto-adjusts the 7-band equalizer to provide the best bass performance regardless of woofer placement.

Specifications	SC-600 IW (In-Wall) Subwoofer
Woofer:	Two 6.5" Active Drivers Two 14" x 3.5" Passive Radiators
Frequency Response: [+/-3 dB]	30-120 Hz
Harmonic Distortion:	<5% (typical)
Magnet Structure:	64 oz. [4 lbs.] each active/128 oz. [8 lbs.] total
Voice Coil:	2" Dual Layer
Video Shielded:	Yes
Cabinet Dimensions* (H/W/D):	16.5" x 14.25" x 3.75" [42 x 36 x 10 cm] *Not installed; excludes grilles, mounting brackets, etc.
Grille:	Grille: 16.25" x 14" [41 cm x 36 cm]
Warranty (parts/labor)	Electronics: 3 years Driver: 5 years
Shipping Weight: (approx.)	33 lbs. [15 Kgs]

Copyright ©2008 Velodyne Acoustics, Inc. Specifications are subject to change without notice.
Other trademarks or registered trademarks are property of their respective owners. March 2008



www.velodyne.com

Velodyne Acoustics, Inc.
345 Digital Drive, Morgan Hill, CA 95037
408.465.2800

Velodyne