

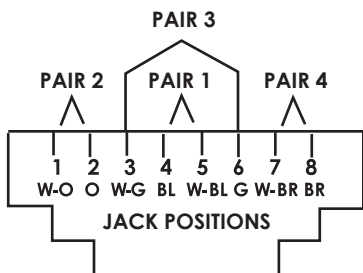
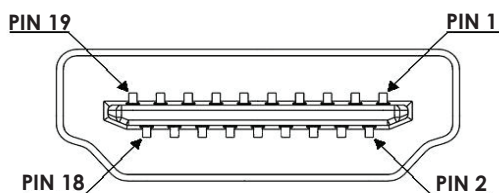
# HM6EK-3 HDMI™ Extender Kit

## KEY FEATURES



HDMI™ Extender Kit 1.3 (Deep Color up to 12 bits) over CAT5  
 Extend HDMI™ signal up to 50 meters (160 ft) over CAT5/CAT6

- HDMI™ 1.3 (Deep Color up to 12 bits) compliant
- Extends the Transmission distance up to 200 ft (60 m) from the source under formats 480p, 576i, 576p, 720p, 1080i, over CAT5e; up to 100 ft (30 m) under 1080p (8bit)
- Extends the Transmission distance up to 65 ft (20 m) from the source under format 1080p (12bit), over CAT6e
- Minimizes the cable skew by selection of 3 switches level digital equalization control
- Allows cascading



**Note:** The length depends on the characteristics and quality of the cable. Higher resolutions and longer transmission distances require low skew cables.

## SPECIFICATIONS

Function:	Transmitter:	Receiver:
Output Connector:	2 RJ-45 Female	1 HDMI™ (A-Type Female)
Input Connector:	1 HDMI™ (A-Type Female)	2 RJ-45 Female
HDMI™:	1.3 compliant	1.3 compliant
Support:	DDC & HDCP	DDC & HDCP
Video support:	480i, 480p, 576i, 576p, 720p, 1080i, 1080p	480i, 480p, 576i, 576p, 720p, 1080i, 1080p
Transmission distance:		
Up to 200ft from source:	Under formats 480i, 480p, 576i, 576p, 720p, 1080i, over CAT5e	Under formats 480i, 480p, 576i, 576p, 720p, 1080i, over CAT5e
Up to 100ft (30m):	Under formats 1080p (8bit), over CAT5e	Under formats 1080p (8bit), over CAT5e
Up to 65ft (20m):	Under formats 1080p (12bit), over CAT6e	Under formats 1080p (12bit), over CAT6e
Max. resolution:	1080p (12bit)	1080p (12bit)
Max cable distance:	200ft (60m) 1080i	200ft (60m) 1080i
Equalizer:	4-level digital control	8-level digital control
Equalizer controlled by:	3 DIP switches	5 DIP switches
TMDS signal:	1.2 Volts (peak to peak)	1.2 Volts (peak to peak)
DDC signal:	5 Volts (peak to peak TTL)	5 Volts (peak to peak TTL)
HDMI™ connector:	Type A (19 pin female)	Type A (19 pin female)
CAT5 connector:	2x RJ-45 8P8C	2x RJ-45 8P8C
Power Supply:	5V 1A DC / 1.5mm	5V 1A DC / 1.5mm
Operation temperature:	32~104°F (0~40°C)	32~104°F (0~40°C)
Storage temperature:	-4~140°F (-20~60°C)	-4~140°F (-20~60°C)
Relative humidity:	20~90% RH (no condensation)	20~90% RH (no condensation)
Housing:	Metal	Metal
Unit Dimensions:	(LxWxH) 2.75" x 2.36" x 1" (LxWxH) 70 x 60 x 25mm	(LxWxH) 2.75" x 2.36" x 1" (LxWxH) 70 x 60 x 25mm
Unit Weight:	4.98 oz (141g)	4.94 oz (140g)

## KEY BENEFITS

- HDTV resolution up to 1080p (8bit)/30m (CAT5)
- Support 480p/720p/180i/1080p
- HDTV resolution up to 1080p (12bit)/20m (CAT6e)
- Support DDC & HDCP
- Use two CAT5 cables
- Easy installation