

# 2014 Supplement Catalog

New Products  
Page 4

Home Theater  
Page 6

HDMI<sup>®</sup>  
Page 8

Audio/Video  
Page 12

Wall Plates  
Page 16

Network & Datacom  
Page 20

FastHome<sup>™</sup>  
Page 24

Power Supplies  
Page 25

Splitters  
Page 26

Hardware  
Page 26

Connectors & Adapters  
Page 28

Tools & Testers  
Page 30

Bulk Cable  
Page 33



San Diego



China



Mexico

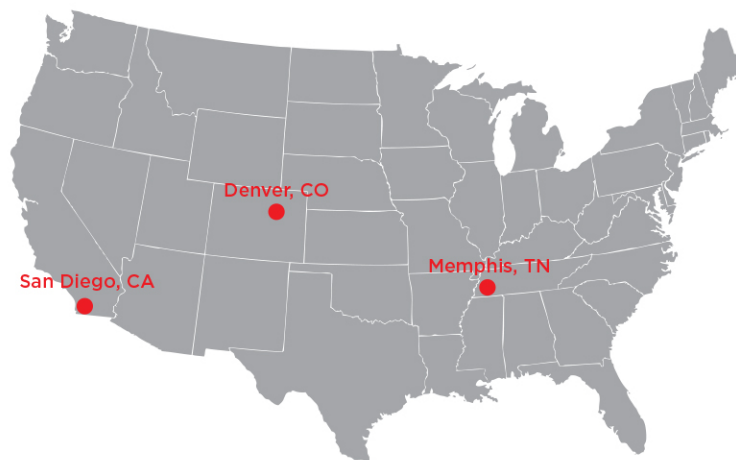
## A Company You Can Count On. A Partner You Can Trust.

For 57 years, Steren Electronics International has provided innovative solutions to the electronics and electrical connectivity world. Our core values have always remained the same - quality products, unparalleled customer service and affordable solutions.

As a manufacturer with diversity credentials and decades of experience, we offer over 5,000 products crafted with innovation, advanced design and award-winning technology. We have built a strong and trustworthy global brand with corporate offices in San Diego, CA; Mexico City, Mexico; and Shanghai, China.

Steren is, and will continue to be, the trusted brand in the industry for technology excellence. You can always count on Steren to provide solutions that ensure customer satisfaction while expanding your business success.

## U.S. Distribution Centers



## Delivering Solutions to Drive Your Business

- High quality manufacturing and distribution
- Innovative research and development
- Leading edge engineering resources
- Unsurpassed technical support
- World class quality assurance
- Superior customer service
- Unique fulfillment solutions



Incorporating Diversity  
into Every Aspect of  
Our Business

# Steren Quality Services

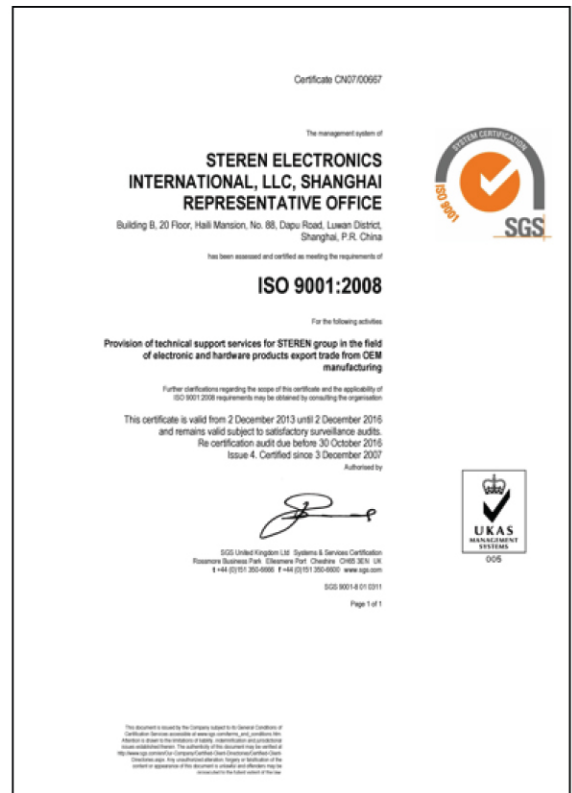
Ensuring quality by maintaining high standards

Product Inspections	Factory Audits	Instrument & Laboratory Testing	Design & Engineering
<p>Pre-Production</p> <p>Production Monitoring</p> <p>IPQC Evaluation</p> <p>Pre-Shipment Inspection</p> <p>Container Load Inspection</p>	<p>Supplier Facilities &amp; Organization Access According to ISO 9001</p> <p>Social Compliance of Your Suppliers with SA 8000 Audits</p>	<p>CPSIA - U.S. Hazardous Materials Testing</p> <p>REACH - EU Chemical Compliance</p> <p>ROHS - Electrical Components Testing</p> <p>Detailed Reports</p>	<p>Product Design Services</p> <p>Structural Analysis &amp; Modeling</p> <p>Application Engineering Support</p> <p>3D Surface Modeling</p> <p>EMC Analysis &amp; Design</p> <p>3D Rapid Prototyping</p> <p>Tooling &amp; Fixture Build</p>

## International Strength and Experience

Steren Electronics International offers world-class manufacturing services in areas of production and assembly processes including: Contract Manufacturing, Electro-Mechanical Assemblies, CNC Machining, Die Casting, Metal Fabrication, Injection Mold, Vacuum Forming, Tooling, and Packaging to Finished Goods.

Our Steren China Office has maintained the ISO 9001 Quality Management System Certification by SGS since 2008. This certification has enabled us to provide unparalleled quality control and a host of value-added services to ensure customer satisfaction.



ISO 9001 Certification

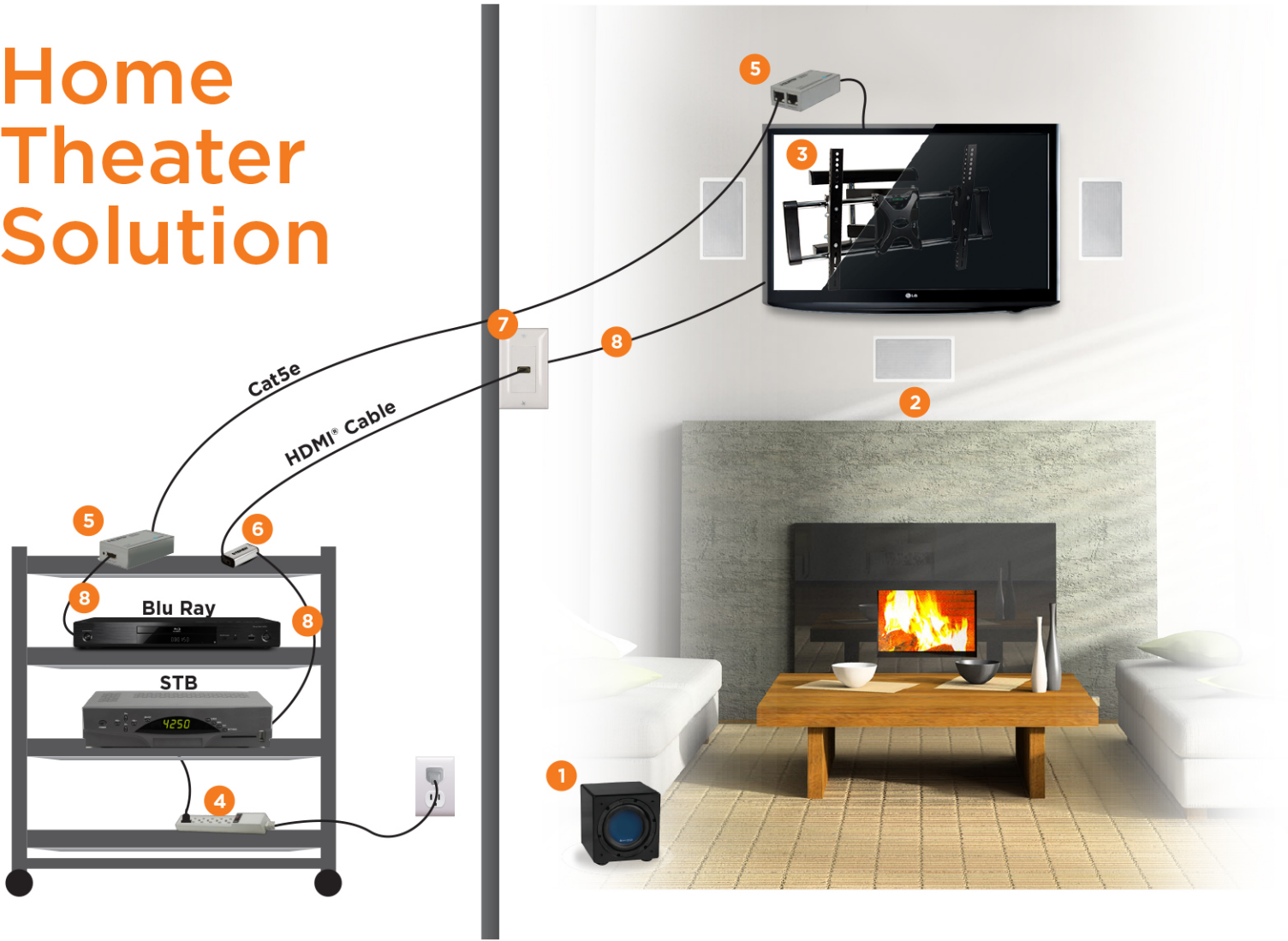
Call: 1-800-266-3333






Specifications subject to change © Copyright 2014



About Steren




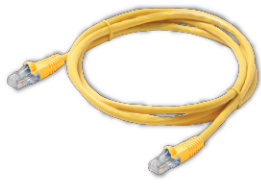



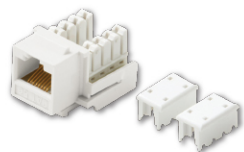
# Home Theater Solution



<p><b>1</b> Sequence Premier Subwoofer 730-405BK</p>  <p>See page 6</p>	<p><b>2</b> Sequence Premier In-Wall Speakers 730-205</p>  <p>See page 6</p>	<p><b>3</b> Medium Articulating TV Mount 720-110</p>  <p>See page 7</p>	<p><b>4</b> 6-Outlet Surge Strip 905-106</p>  <p>See page 25</p>
<p><b>5</b> HDMI® Over Cat5e/Cat6 BL-526-051</p>  <p>See page 10</p>	<p><b>6</b> HDMI® Repeater BL-526-031</p>  <p>See page 4</p>	<p><b>7</b> HDMI® Pigtail Wallplate 526-101</p>  <p>See page 9</p>	<p><b>8</b> HDMI® High-Speed w/Ethernet Cable 517-306BK</p>  <p>See page 8</p>

# Modern Office Solution



<p><b>1</b> BASELINE - Cat5e UTP CMR Cable 13910</p>  <p>See page 34</p>	<p><b>2</b> Modular Plug Crimp Tool 300-568</p>  <p>See page 31</p>	<p><b>3</b> Cat5e Patch Panel 310-324</p>  <p>See page 21</p>	<p><b>4</b> Cat5e Molded Patch Cord 308-607YL</p>  <p>See page 23</p>
<p><b>5</b> RG6/U CCS Conductor 200-931BK</p>  <p>See page 33</p>	<p><b>6</b> Slim Wall Tap &amp; USB Charger BL-920-320</p>  <p>See page 4</p>	<p><b>7</b> Folding Cable Caddy 204-407</p>  <p>See page 30</p>	<p><b>8</b> 90° Keystone Jack (Cat5e) 310-120BL</p>  <p>See page 20</p>

# New Products



**270°**  
Rotating bypass  
outlet plate

## Rotating USB Charger

- 270° Rotating outlet plate
- USB Charging Port (1A Total)
- Overcharge and short circuit protection
- Available in blue



Sell  
Pack

BL-920-205 1

## Slim Wall Tap and USB Charger

- 2 USB Charging Ports (2.1A Total)
- 1800 Watts
- 2 AC Outlets



Sell  
Pack

BL-920-320 1



**1800**  
Watts

## Triple Tap Outlet and USB Charger

- Converts 1 AC outlet into 3 AC outlets
- 1875 Watts
- 2 USB charging ports (2.1A Total)
- 90J Surge protection with LED indicator



Sell  
Pack

BL-920-310 1



## HDMI® Inline Repeater

- Supports exceptionally long cable runs up to 145ft (45m) with 2 units
- Up to 1080p resolution with 3D and deep color
- Includes High-Speed Ethernet channel to share network connections
- HDCP pass-through



Sell  
Pack

BL-526-031 1



# New Products

## Apple iOS 30 Pin to USB Cable

- Works with iPhone® 3G/3GS/4/4S, iPod® nano, iPod® touch, iPad® 1/2/3
- MFI Certified = 'Made for iPhone®/iPod®/iPad®'
- Features full charging and syncing capability



Sell Pack

PK-507-303

10



## Apple iOS 8 Pin to USB Cable

- Works with iPhone® 5/5S/5C, iPad® mini, iPad® Air, iPod® touch (5th generation), and iPod® nano (7th generation)
- MFI Certified = 'Made for iPhone®/iPod®/iPad®'
- Features full charging and syncing capability



Sell Pack

PK-507-803

10



## USB A to Micro B Patch Cable

- Premium high-speed USB 2.0 Certified cables
- Supports 1.5/12/480 Mbps transfer, hot-swappable
- Backward-compatible with USB 1.1 devices
- USB type A male to type micro B male connectors



Sell Pack

506-113 3'  
506-116 6'

10  
10



## USB 2.0 A to Mini B Patch Cable

- Premium high-speed USB 2.0 Certified cables
- Supports 1.5/12/480 Mbps transfer, hot-swappable
- Backward-compatible with USB 1.1 devices
- USB type A male to type mini B male connectors



Sell Pack

506-513 3'  
506-516 6'

10  
10



## soundQ Bluetooth® Speaker

- Compact speaker that easily connects to any Bluetooth® compatible device
- Attaches to almost any surface with a suction cup stand
- Rechargeable built-in lithium battery provides up to 5 hours of power on one charge
- Available in teal, pink, orange, and purple



Sell Pack

BL-750-105

1

Sticks to almost any surface



**SOUNDQ**  
Your Mobile Sound Solution

Call: 1-800-266-3333

Specifications subject to change © Copyright 2014



New Products

5

# Home Theater

## Premier Subwoofer

Sell Pack 1



730-405 8" Front Fire Subwoofer / BK

### Features

- Auto signal-sensing turn on and standby modes
- Variable crossover and volume level controls
- 0°/180° Phase reverse switch
- High-gloss black finish
- Frequency response: 40-200Hz; 90dB sensitivity
- 10" H x 10" W x 11 3/4" D; Weight: 25 lbs

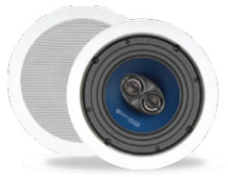


## Premier Series Loudspeakers

Sell Pack 1



730-201 6.5" In-Ceiling Speakers (Pr)



730-202 6.5" In-Ceiling Stereo Speaker (Ea)



730-203 8" In-Ceiling Speakers (Pr)



730-204 6.5" In-Wall Speakers (Pr)



730-205 5" Dual LCR Speaker (Ea)



730-206 6.5" In-Ceiling LCR Speaker (Ea)

### Features

- Pivoting liquid-cooled dome tweeters
- Polycarbonate cone woofers with rubber surrounds
- Pivoting tweeters allow directional positioning toward listening area
- Voice matched to integrate seamlessly with other Sequence speakers
- Baffle and grille fully paintable to match any décor
- Integrated C-clamp mounting system
- Powder coated metal grilles
- Please contact your Sales Rep for access to Sequence Premier products

## Essentials Series Loudspeakers

Sell Pack 1



730-101 6.5" In-Ceiling Speakers (Pr)



730-102 6.5" In-Ceiling Stereo Speaker (Ea)



730-103 6.5" In-Wall Speakers (Pr)

### Features

- Mica-filled poly laminate cone woofers with rubber surrounds
- Voice matched to integrate seamlessly with other Sequence speakers
- Baffle and grille fully paintable to match any décor
- Integrated C-clamp mounting system
- Powder coated metal grilles
- 6.5" Woofers through entire line
- 1/2" Titanium anodized dome tweeters
- Dual voice coil speakers utilize dual cone technology

## Indoor/Outdoor Speakers

Sell Pack 1



730-350 5.25" Outdoor Speakers Weatherized, Black (Pr) BK,WH



730-360 6.5" Outdoor Speakers Weatherized, White (Pr) BK,WH

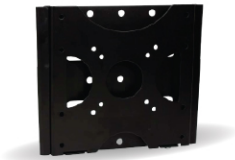
### Features

- Long-Throw polycarbonate cone woofers with rubber surrounds
- Ultra-wide dispersion, titanium anodized dome tweeters
- 12dB Electro acoustic crossovers
- Gold plated 5-way binding posts
- Corrosion resistant, powder coated aluminum grilles
- Brass inserts accept universal speaker mounts
- Rust-proof adjustable mounting brackets
- Available in black or white



## Flat Wall Mounts

Sell Pack 1



720-005 Small Flat TV Mount



720-010 Medium Flat TV Mount



720-015 Large Flat TV Mount

### Features

- VESA Sizes from 75x75 up to 800x600
- TV Sizes from 10" up to 65"
- High Load Capacity up to 132lbs (75kg)
- Maximum 1" from wall



## Tilt Wall Mounts

Sell Pack 1



720-200 Small Tilt TV Mount



720-205 Medium Tilt TV Mount



720-215 Large Tilt TV Mount

### Features

- VESA Sizes from 75x75 up to 800x600
- TV Sizes from 10" up to 65"
- High Load Capacity up to 132lbs (75kg)
- -5° to +15° Tilt Range



## Articulating Wall Mounts

Sell Pack 1



720-105 Small Articulating TV Mount



720-110 Medium Articulating TV Mount



720-115 Large Articulating TV Mount

### Features

- VESA Sizes from 75x75 up to 800x500
- TV Sizes from 10" up to 65"
- High Load Capacity up to 132lbs (75kg)
- Extension Range: 3" to 21.5"



## Accessories

Sell Pack 1



730-504 4-Way Impedance Matching Speaker Selector



730-506 6-Way Impedance Matching Speaker Selector



730-507 6-Way Impedance Matching Speaker Selector w/VC



730-510 Rotary Volume Control w/3 Color Plate Option



730-520 Slider Volume Control w/3 Color Plate Option



730-525 Weatherproof Volume Control Enclosure



730-560 6.5" In-Ceiling Rough-In Kit (Pr)  
730-580 8" In-Ceiling Rough-In Kit (Pr)



730-561 6.5" In-Wall Rough-In Kit (Pr)

Call: 1-800-266-3333

Specifications subject to change © Copyright 2014



Home Theater

# HDMI®

## HDMI® High-Speed with Ethernet Cable

- Supports resolutions beyond 1080p, up to 4Kx2K
- Ethernet Data Channel to share high-speed network connection
- HDMI® High-Speed with Ethernet Certified
- Full 3D resolution capable



Sell Pack

517-303BK	3'	10
517-306BK	6'	10
517-310BK	10'	10
517-312BK	12'	10
517-315BK	15'	10
517-330BK	30'	1
517-350BK	50'	1



## Stereon HDMI® High-Speed with Ethernet Cables



- Supports extremely high resolutions 4x the clarity of 1080p/60 up to 4k @ 50/60 equal to 2160p
- Supports video bandwidth for the new more efficient signaling method, with speeds up to 18Gbps
- Provides for simultaneous delivery of multi-stream audio to multiple users (up to 4)
- Designed to support TV's with high refresh rates (up to 800Mhz)
- Fully able to transfer all 3D content
- Supports up to 32 audio channels and 1536kHz sampling frequency
- Provides additional support for the new wide angle theatrical 21:9 video aspect ratio



## HDMI® High-Speed with Ethernet, Swivel Cable

- Supports resolutions beyond 1080p, to 4Kx2K
- Swivel connector for flexibility in tight installations
- Ethernet Data Channel to share high-speed network connection
- HDMI® High-Speed with Ethernet Certified
- Full 3D resolution capable



Sell Pack

517-806BK	6'	10
517-812BK	12'	10



## HDMI® to Micro HDMI® High-Speed with Ethernet Cable

- HDMI® Standard (A) to Micro (D) Connector
- Supports resolutions beyond 1080p, up to 4Kx2K
- Ethernet Data Channel to share high-speed network connection
- HDMI® High-Speed with Ethernet Certified
- Full 3D resolution capable



Sell Pack

517-401BK	6"	5
517-402BK	18"	5
517-423BK	3'	5
517-426BK	6'	5
517-430BK	10'	5



## DVI-D to HDMI® Gold

- HDMI® to DVI-D (Single-Link) cables
- Precision manufactured fully molded construction
- Super-flexible satin black PVC jacket



Sell Pack

516-903BK	3'	10
516-906BK	6'	5
516-910BK	10'	5
516-912BK	12'	5
516-915BK	15'	5
516-930BK	30'	5

## HDMI® Wall Plate

- Flush mount decorator-style HDMI® wall plate
- Feed-through design
- Available in white and ivory



Sell Pack

516-101 Standard HDMI®  
516-102 Standard Dual HDMI®

5  
5



## HDMI® + RCA Jack Wall Plate

- Flush mount decorator-style HDMI® wall plate
- Feed-through design with RCA jack



Sell Pack

516-108 Standard HDMI® + RCA Jack  
516-113 Standard HDMI® + 2-RCA Jack (R/W)  
516-115 Standard HDMI® + 3-RCA Jack (Y/R/W)  
516-117 Standard HDMI® + 3-RCA Jack (R/G/B)

5  
5  
5  
5



## Standard HDMI® + F Jack Wall Plate

- Flush mount decorator-style HDMI® wall plate
- Feed-through design with F splice



Sell Pack

516-111 5



## Passive HDMI® Over Cat5e Wall Plate

- HDMI® over dual Cat5e cables in a wall plate solution
- Passive design delivers 1080p full HD video and digital audio for 50'



Sell Pack

526-119 5



## HDMI® Pigtail Wall Plate

- In-wall wiring solution between audio/video components with a neat, clean exterior connection point
- 8.5" HDMI® pigtail cable
- Available in white and ivory



Sell Pack

526-101 Standard HDMI® Pigtail  
526-102 Standard Dual HDMI® Pigtail  
526-111 Standard HDMI® Pigtail + F Jack  
526-115 Standard HDMI® Pigtail + 3-RCA Jack (Y/R/W)  
526-117 Standard HDMI® Pigtail + 3-RCA Jack (R/G/B)

5  
5  
5  
5  
5



# HDMI®

## HDMI® 3x1 Mini Switch

- Provides additional HDMI® connections to your HDTV for the ultimate viewing experience
- 3 HDMI® inputs, 1 HDMI® output
- HDMI® High-Speed Certified and HDCP Compliant
- Powered directly from most HDMI® sources
- Up to 1080p resolutions and 3D compatible



Sell Pack

BL-526-033 1



## HDMI® 4x2 Matrix Switch

- Cross-switch 4 different HD media sources between 2 different HDTVs or displays
- 4 HDMI® inputs, 2 HDMI® outputs
- HDMI® High-Speed Certified and HDCP Compliant
- Up to 1080p resolution and 3D compatible



Sell Pack

BL-526-039 1



## HDMI® over Cat5e/Cat6 (Active)

- Extends HDMI® audio/video signal through two Cat5e/Cat6 cables
- Cat5e up to 200ft for 1080p resolution
- Cat6 up to 250ft for 1080p resolution
- HDMI® High-Speed Certified HDCP Compliant, 3D compatible
- Power LED and active signal LED



Sell Pack

BL-526-051 1



## HDMI® Inline Booster with EQ (Passive)

- Supports exceptionally long cable runs up to 135ft
- Up to 1080p resolution
- Fully compatible with HDCP Compliant components
- Powered directly from most HDMI® sources
- 24k Gold-plated connectors for optimum signal transfer



Sell Pack

BL-526-030 1



## HDMI® Switch

- Provides additional HDMI® connections to your HDTV for the ultimate viewing experience
- 3 or 5 HDMI® inputs, 1 HDMI® output
- HDMI® High-Speed Certified and HDCP Compliant
- Up to 1080p resolution and 3D compatible



Sell Pack

BL-526-035 3x1 1  
BL-526-037 5x1 1



## HDMI® 1x4 Splitter

- Takes high-definition video from a single HDMI® media source and directs it to 4 separate HDTVs or displays, works up to 50ft away
- Stream a single HD media source to 4 displays
- HDMI® High-Speed Certified and HDCP Compliant
- Up to 1080p resolution and 3D compatible



Sell Pack

BL-526-041 1



## HDMI® over Single Cat5e/Cat6 with IR

- Extend HDMI® Audio/Video/IR signal through only 1 Cat5e/Cat6 cable
- Cat5e up to 200ft for 1080p resolution
- Cat6 up to 250ft for 1080p resolution
- HDMI® High-Speed with Ethernet pass-through, HDCP 1.1 Compliant, fully 3D compatible
- Bi-directional IR Pass-through (20kHz-60kHz)



Sell Pack

BL-526-055 1



## HDMI® Jack to Plug Right Angle & Swivel Adapter

- 90° Jack to plug right angle port saver
- 180° Jack to plug adjustable swivel



Sell Pack

528-001  
528-002

5  
5

528-001



528-002



## HDMI® Jack to Jack Right Angle Adapter

- 90° Right angle coupler



Sell Pack

528-004

5



## HDMI® Jack to Jack Swivel Adapter

- 180° Adjustable swivel



Sell Pack

528-005

5



## HDMI® Jack to Jack Adapter

- Couples 2 HDMI® cables for longer runs



Sell Pack

528-006

5



## HDMI® Jack to Mini HDMI® Plug Adapter

- Adapts standard HDMI® cable to Mini cable for use with cameras, camcorders, and other equipped devices



Sell Pack

528-010

5



## HDMI® to DVI-D Adapter

- Ideal for HDTV sets, DVD players/recorders, set-top boxes and flat-panel displays
- Provides superior connections between HDMI® and DVI-D single-link devices



Sell Pack

516-007 HDMI® Jack to DVI-D Plug Adapter  
516-008 HDMI® Plug to DVI-D Jack Adapter

5  
5

516-007



516-008



## HDMI® Keystone Pass-through Jack

- HDMI® connector modular insert used with keystone wall plates



Sell Pack

310-485

5



# Audio/Video

## Personal Audio Y-Cables

- Suitable for portable CD players, MP3/MP4 players, PC sound cards and other devices



Sell Pack

252-001	6"	2 3.5mm Jacks to 3.5mm Plug	25
252-002	2'	2 3.5mm Jacks to 3.5mm Plug	25
252-006	6"	2 3.5mm Jacks to 3.5mm Plug	10
252-051	6"	2 RCA Plugs to 3.5mm Jack	25
252-052	2'	2 RCA Plugs to 3.5mm Jack	25
252-056	6"	2 RCA Plugs to 3.5mm Jack	10
252-062	12'	2 RCA Plugs to 3.5mm Jack	10



## 6" 2-RCA Jacks to RCA Plug Cable

- Shielded Y-cables
- Black PVC jacket
- Fully molded nickel-plated RCA plugs



Sell Pack

255-010 100



## 6" 2-RCA Plugs to RCA Jack Cable

- Shielded Y-cables
- Black PVC jacket
- Fully molded nickel-plated RCA plugs



Sell Pack

255-025 100



## 2-RCA Plugs to 3.5mm Stereo Plug Cable

- Shielded Y-cables
- Black PVC jacket
- Fully molded nickel-plated RCA



Sell Pack

255-045 6' 25  
255-047 12' 10



## RCA Audio Patch Cords

- Shielded RCA patch cord
- Black PVC jacket
- Fully-molded nickel-plated RCA plugs



Sell Pack

255-120 3' 25  
255-125 6' 10  
255-130 12' 10  
255-134 20' 10  
255-135 25' 5  
255-138 50' 5



## S-Video Cable

- Low-loss fully-shielded S-video cables
- 4-Contact mini-DIN plug to plug



Sell Pack

255-199 3' 25  
255-200 6' 25  
255-202 12' 25  
255-206 25' 10  
255-208 50' 5  
255-209 75' 6  
255-211 100' 5



## Stereo 3-RCA Video Patch Cord

- Low-loss fully shielded RCA dubbing cable
- 1 RG59-video & 2x shielded audio conductors



Sell Pack

206-273 3' 25  
206-275 6' 25  
206-277 12' 10  
206-282 18' 5  
206-284 25' 5  
206-288 50' 1  
206-289 60' 1



# Audio/Video

## Toslink to Toslink Optical Cable

- Suitable for CD, MiniDisc, DVD, MP3 applications
- Blue PVC jacket



Sell Pack

260-006 6'	25
260-012 12'	10



## SPDIF Audio Cable, RCA-RCA

- Provides superior connections for digital audio equipment
- Fully supports S/PDIF audio file transfer format



Sell Pack

254-006 6'	10
254-012 12'	5



## Single RCA Premium Audio Cable

- High-definition home theater RCA interconnects
- Unparalleled quality and top-line performance
- Ultra-flexible rubberized PVC jacket
- High-retention RCA plugs
- Color-coded, fully molded construction



Sell Pack

254-110 3'	25
254-115 6'	25
254-120 12'	10
254-125 25'	10
254-130 50'	5



## Dual RCA Premium Audio Cable

- High-definition home theater RCA interconnects
- Unparalleled quality and top-line performance
- Ultra-flexible rubberized PVC jacket
- High-retention RCA plugs
- Color-coded, fully molded construction



Sell Pack

254-210 3'	25
254-215 6'	10
254-220 12'	10
254-225 25'	5
254-230 50'	1



## Triple RCA Premium Audio/Video Cable

- High-definition home theater RCA interconnects
- Unparalleled quality and top-line performance
- Ultra-flexible rubberized PVC jacket
- High-retention RCA plugs
- Color-coded, fully molded construction



Sell Pack

254-310 3'	10
254-315 6'	10
254-320 12'	5
254-325 25'	1
254-330 50'	1



## Steren Delivers Value

Steren is dedicated to providing you high quality products at competitive prices. That's why we implemented a standardized Sell Pack quantity for our commonly purchased items. It's our way to save you a few extra dollars.

Look for the Sell Pack logo next to each product number to find the product quantity in each package.

**Sell Pack**

## Compression Banana Plugs (2)

- Terminates speaker wires to connect amplifier/receiver and speakers
- Provides durable and secure fit for superior sound quality
- Features push-type installation



Sell Pack

250-201BK Black	10
250-201RD Red	10



## Set-Screw Banana Plugs (2)

- Terminates speaker wires to connect amplifier/receiver and speakers
- Provides durable and secure fit for superior sound quality
- Features push-type installation



Sell Pack

250-202BK Black	10
250-202RD Red	10



# Audio/Video

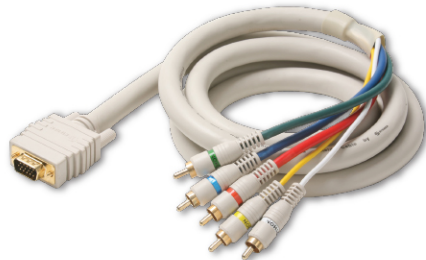
## SVGA-5 RCA RGB H/V Component Video Cable

- Fully supports RGB high-resolution standards
- Ultra-flex satin-ivory rubber PVC jacket
- Gold-plated high-retention connectors
- Color-coded, fully molded construction



Sell Pack

253-606	6'	10
253-612	12'	5
253-625	25'	1



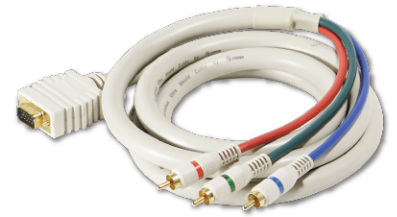
## SVGA-3 RCA RGB Component Video Cable

- Fully supports RGB high-resolution standards
- Ultra-flex satin-ivory rubber PVC jacket
- High-retention connectors
- Color-coded, fully molded construction



Sell Pack

253-506	6'	10
253-512	12'	5
253-525	25'	1
253-550	50'	1



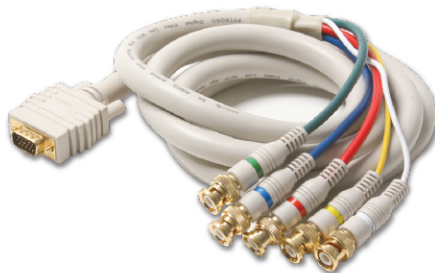
## SVGA-5 BNC RGB H/V Component Video Cable

- Fully supports RGB high-resolution standards
- Ultra-flex satin-ivory rubber PVC jacket
- Gold-plated high-retention connectors
- Color-coded, fully molded construction



Sell Pack

253-806	6'	5
253-812	12'	5
253-825	25'	5



## 3 RCA Component Video Cable

- Component video RCA interconnects
- Provides high-definition video signal transfer between DVD players and high-end TVs or monitors for optimum picture resolution and color
- Flat-ribbon cable configuration
- High-retention RCA connectors
- Color-coded, fully molded construction



Sell Pack

254-503	3'	10
254-506	6'	10
254-512	12'	5
254-525	25'	1
254-550	50'	1
254-575	75'	1
254-500	100'	1



## 5 RCA Component Audio/Video Cable

- Component video and audio RCA interconnects
- Provides high-definition video signal transfer between DVD players and high-end TVs or monitors for optimum picture resolution and color
- Flat-ribbon cable configuration
- High-retention RCA connectors
- Color-coded, fully molded construction



Sell Pack

254-603	3'	10
254-606	6'	10
254-612	12'	6
254-625	25'	1
254-650	50'	1
254-675	75'	1
254-600	100'	1



**Composite A/V:** 3 Separate cables to carry the video signal on the yellow cable and stereo analog left/right audio on the red and white cables.

**Component Video:** 3 Separate cables to carry different portions of just the video signal. The green carries the Y portion of the color signal and the red and blue cables carry the Pr and Pb portions of the video signal.

**RGB:** Another video type where 3 separate cables carry the red (R), green (G), and blue (B) portions of the video signal. Not to be used in place of component video and generally used in computer monitors.



# Audio/Video

## DVI-D Dual Link Video Cable

- Installs on any DVI-D socket
- Dual link configuration (2048 x 1536)
- Fully molded construction



Sell Pack

506-956	6'	5
506-960	10'	5
506-962	12'	5



## SVGA HD15 Cable (M/M)

- Suitable for VGA/SVGA computer monitors, data projectors and other video displays
- Transfers analog video signals and connects to 15-Pin HD15 SVGA jacks
- Fully molded construction with ferrites



Sell Pack

253-303	3'	5
253-306	6'	5
253-310	12'	5
253-325	25'	5
253-350	50'	1
253-375	75'	1
253-300	100'	1



## SVGA + 3.5mm Stereo Audio/Video Cable (M/M)

- Carries video and audio conveniently through one cable
- Transfers analog video signals and connects to 15-Pin HD15 SVGA jacks and analog audio signals to 3.5mm stereo jacks
- Fully molded construction



Sell Pack

253-203	3'	5
253-206	6'	5
253-212	12'	1
253-225	25'	1
253-250	50'	1
253-200	100'	1



## RG59 F-F Patch Cable

- Suitable for general video applications
- 75Ω Low-loss RG59/U coaxial cable



Sell Pack

205-000	1'	10
205-010	3'	10
205-015	6'	10
205-018	9'	10
205-020	12'	10
205-030	25'	10
205-035	50'	5
205-045	100'	5



## RG6 F-F Patch Cable

- 75Ω RG6/U UL Listed high definition cable
- Suitable for DSS, C/Ku satellite installations
- High-performance 100% fully swept to 3GHz



Sell Pack

205-410	3'	10
205-415	6'	10
205-418	9'	10
205-420	12'	10
205-423	15'	10
205-430	25'	10
205-435	50'	5
205-440	75'	5
205-445	100'	5



**CUSTOM LENGTH AND  
BUILD JUMPER  
ASSEMBLIES AVAILABLE**

**1-800-266-3333**

# Wall Plates

## Blank Cover Plate

- High-impact ABS plastic
- Flush-mount smooth finish
- Supplied with matching-color mounting screws
- Available in white and ivory



Sell Pack

200-257 Blank Cover Plate 10  
200-258 Blank Cover Plate 10



## Mid-Size Blank Cover Plate

- High-impact ABS plastic
- Flush-mount smooth finish
- Supplied with matching-color mounting screws
- Available in white, ivory, almond, and light almond



Sell Pack

200-418 10



## Standard TV Wall Plate

- High-impact ABS plastic
- Flush-mount smooth finish
- Supplied with matching-color mounting screws
- Available in white, ivory, almond, light almond, and black



Sell Pack

200-251 TV Wall Plate 10  
200-252 Dual-TV Wall Plate 10



## Standard TV Decorator Wall Plate, 2 Piece

- Single gang decorator-style flush wall plate
- High-impact ABS plastic mounting bracket
- Supplied with matching-color mounting screws
- Gold plated F81 splice
- Available in white and light almond



Sell Pack

200-253 10



## Standard TV 1-Hole Wall Plate

- High-impact ABS plastic
- Flush-mount smooth finish
- Supplied with matching-color mounting screws
- Available in white, ivory, and brown



Sell Pack

200-254 10



## Mid-Size TV Wall Plate

- High-impact ABS plastic
- Flush-mount smooth finish
- Supplied with matching-color mounting screws
- Available in white and ivory



Sell Pack

200-411 10



## Standard 4C Tel + TV Decorator Wall Plate, 2 Piece

- Single-gang decorator-style flush plate
- High-impact ABS plastic mounting bracket
- Gold-plated contacts
- Supplied with matching-color mounting screws
- Available in white, ivory, and light almond



Sell Pack

300-103 10



## Standard 4C Tel + TV Wall Plate

- High-impact ABS plastic
- Flush-mount smooth finish
- Gold-plated telephone contacts
- Supplied with matching-color mounting screws
- Available in white, ivory, almond, and light almond



Sell Pack

300-234 10



## Dual-TV-Tel Ivory Smooth Jack

- High-impact ABS plastic
- Flush-mount smooth finish
- Gold-plated telephone contacts
- High-performance 2.5GHz F81 splice
- Supplied with matching-color mounting screws
- Available in white and ivory



Sell Pack

300-237 10



# Wall Plates

## Standard 4C Tel Decorator Wall Plate, 2 Piece

- Single-gang decorator-style flush plate
- High-impact ABS plastic mounting bracket
- Gold-plated contacts
- Supplied with matching-color mounting screws
- Available in white, ivory, and light almond



Sell Pack

300-003

10



## 4C Round Wall Plate

- High-impact ABS plastic
- Gold-plated contacts
- Supplied with matching-color mounting screws
- Available in white and ivory



Sell Pack

300-054

10



## Standard 4C Tel Hanging Wall Plate

- Wall-mounted telephone modular jack plate
- High-impact ABS plastic
- Gold-plated contacts
- Supplied with matching-color mounting screws
- Available in white and ivory



Sell Pack

300-094

10



## Standard 4C Tel Hanging Wall Plate

- Wall-mounted telephone modular jack plate
- Gold-plated contacts
- High-impact metal
- Available in steel



Sell Pack

300-095

10



## Standard 4C Tel Wall Plate

- High-impact ABS Plastic
- Gold-plated contacts
- Flush-mount smooth finish
- Supplied with matching-color mounting screws
- Available in white, ivory, almond, and light almond



Sell Pack

300-204

10



## Standard 4C 2-Tel Wall Plate

- High-impact ABS Plastic
- Gold-plated contacts
- Flush-mount smooth finish
- Supplied with matching-color mounting screws
- Available in white, ivory, almond, and light almond



Sell Pack

300-214

10



## 4C Tel Surface Jack

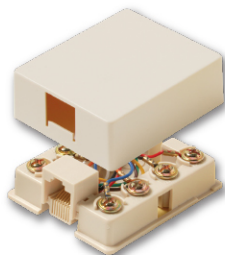
- Modular telephone or data surface jack
- High-impact ABS Plastic with mounting screws
- Gold-plated contacts
- Available in white and ivory



Sell Pack

300-145

10



## 4C 2-Tel Surface Jack

- Modular telephone or data surface jack
- High-impact ABS Plastic with mounting screws
- Gold-plated contacts
- Available in white and ivory



Sell Pack

300-146

10



## Surface Mount Junction Box

- Suitable for single-gang wall plate
- High-impact ABS plastic
- Threaded brass inserts
- Available in white



Sell Pack

310-100

15



# Wall Plates

## Duplex Receptacle Wall Plate

- Fits standard electrical switch boxes
- High-impact ABS plastic
- Smooth finish
- Supplied with matching-color mounting screws
- Available in white and ivory



Sell Pack

310-820	Single Gang	10
310-822	Dual Gang	10



## Round Receptacle Wall Plate

- Fits standard electrical switch boxes
- High-impact ABS plastic
- Smooth finish
- Supplied with matching-color mounting screws
- Available in white and ivory



Sell Pack

310-830	Single Gang	10
---------	-------------	----



## Standard Keystone Wall Plate

- Flush mount keystone wall plate - 1, 2, 3, 4 or 6 cavity
- Holds industry standard modular keystone inserts
- Smooth finish high-impact ABS construction
- Supplied with matching-color mounting screws
- Available in white and ivory



Sell Pack

310-201	1-Port	10
310-202	2-Port	10
310-203	3-Port	10
310-204	4-Port	10
310-206	6-Port	10



## Decorator Cover Wall Plate

- Decorator-style flush wall plate for residential or commercial structured wiring
- Smooth finish high-impact ABS plastic
- Supplied with matching-color mounting screws



Sell Pack

310-801	Single Gang	10
Available in white		
310-802	Dual Gang	10
Available in white		
310-804	Quad Gang	10
Available in white and ivory		



## Keystone Decorator Wall Plate

- For use with decorator-style wall plate
- Holds industry standard modular keystone inserts
- High-impact ABS plastic
- Smooth finish
- Supplied with matching-color mounting screws
- Available in white



Sell Pack

310-851	1-Port	10
310-852	2-Port	10
310-853	3-Port	10
310-854	4-Port	10



## FACT

The Consumer Electronics Industry estimated 2013 revenues were \$202,696 million. The Accessories and Media Category was estimated at \$19,359 million.

Source: Consumer Electronics Association



# Wall Plates

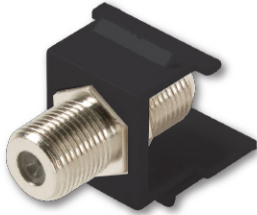
## Keystone F Jack Adapter

- Connector-module insert used with keystone wall plates
- Snap-in tabs make modules easy to insert and remove for adjustments and wiring changes
- Available in white, ivory, almond, and light almond

Sell Pack

310-415

100



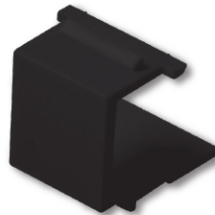
## Keystone Blank Insert

- Connector-module insert used with keystone wall plates
- Snap-in tabs make modules easy to insert and remove for adjustments and wiring changes
- Available in white, ivory, almond, and light almond

Sell Pack

310-420

100



## Keystone 5-Way Binding Post, Black Band

- Connector-module insert used with keystone wall plates
- Snap-in tabs make modules easy to insert and remove for adjustments and wiring changes
- Available in white and ivory

Sell Pack

310-467 Black Band

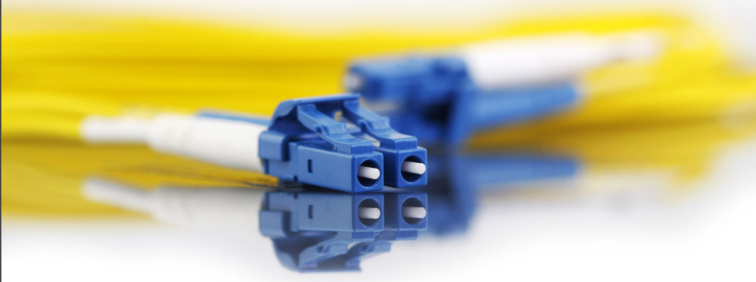
25

310-468 Red Band

25



## Custom Fiber Optic Solutions

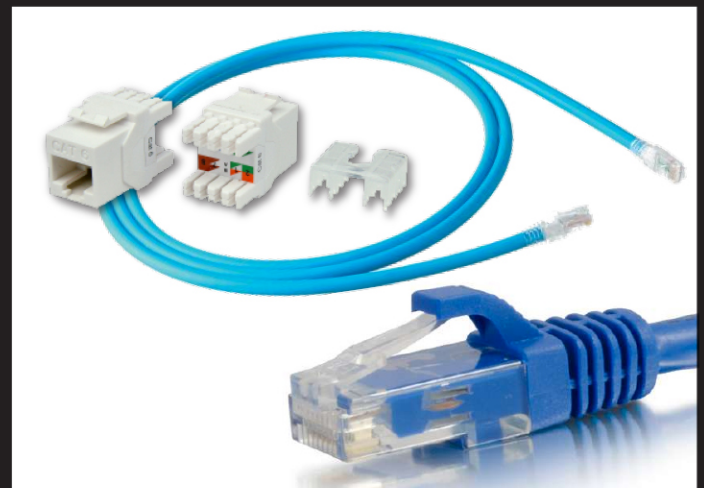


Steren offers a full line of custom assemblies and fiber products built to your specifications.

Our fiber optic solutions serve broadband cable and satellite TV operators, catalog and telephony system contractors, and many other markets.

*Contact a Steren sales representative today to learn how we can support your fiber optic business. 1-800-266-3333*

## Ask Your Sales Rep About Steren Cat6a Products



Including Patch Cords from 3ft to 100ft, Bulk Cable (Riser and Plenum), Keystone Jacks and Modular Plugs

- Built to the new TIA/EIA 568-C-1 standard for Cat6a (augmented) cabling
- Able to provide twice the bandwidth of standard Cat6, up to 500Mhz
- Support for network data systems up to 10GBASE-T, with up to 100m connections
- Fully tested for new parameters such as: alien attenuation crosstalk ratio far-end (AACRF), alien far-end crosstalk (AFEXT), alien near-end crosstalk (ANEXT), power sum alien attenuation crosstalk ratio far-end (PSAACRF), power sum alien far-end crosstalk (PSAFEXT), and power sum alien near-end crosstalk (PSANEXT)

Call: 1-800-266-3333

Specifications subject to change © Copyright 2014



Wall Plates

19

# Network & Datacom

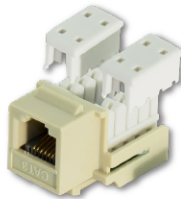
## Keystone 6C RJ12 110 Jack

- Cat3 voice grade UL Listed RJ12 keystone jacks
- 22-26 AWG 110-IDC contacts
- UL94V-0 thermoplastic ABS housing
- Available in white, ivory, and light almond



Sell Pack

310-107 25



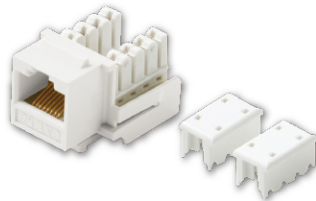
## 90° Keystone Jack (Cat5e)

- Cat5e UL Verified and Listed keystone jack
- 22-26 AWG 110-IDC contacts
- UL94V-0 thermoplastic ABS housing 90°
- Available in multiple colors



Sell Pack

310-120 25



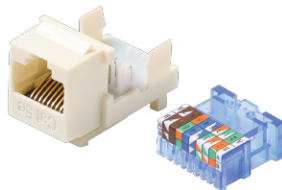
## Tool-Less Keystone Jack (Cat5e)

- Cat5e UL Verified and Listed keystone tool-less jack
- Self-terminating IDC mechanism
- 22-26 AWG 110-IDC contacts
- UL94V-0 thermoplastic ABS housing
- Available in multiple colors



Sell Pack

310-131 25

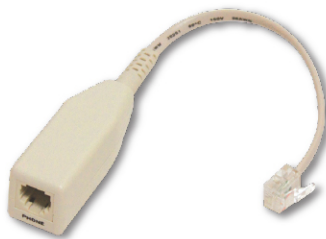


## Telephone DSL Filter - Single Line

- Single-line configuration
- Plug-and-play installation
- Meets ANSI TIE 1.4 7R2 standards for DSL filter compliance
- Available in ivory

Sell Pack

300-261 10



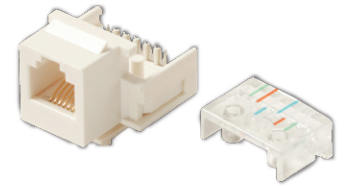
## Keystone 6C RJ12 Jack

- Cat3 voice grade UL Listed RJ12 keystone jacks
- Quick snap-down cover termination
- 22-26 AWG contacts
- UL94V-0 thermoplastic ABS housing
- Available in white, ivory, almond and black



Sell Pack

310-106 25



## Keystone Jack (Cat5e)

- Cat5e UL Verified and Listed keystone jack
- 22-26 AWG 110-IDC contacts
- UL94V-0 thermoplastic ABS housing 180°
- Available in multiple colors



Sell Pack

310-110 25



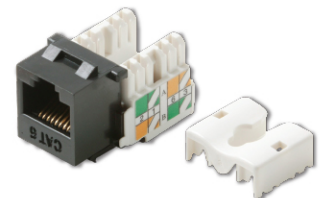
## 90° Keystone Jack (Cat6)

- Fast Media™ Cat6 UL Listed keystone jack
- 22-24 AWG 110-IDC contacts
- UL94V-0 thermoplastic ABS housing 90°
- Available in multiple colors



Sell Pack

310-140 25



## Tool-Less Keystone Jack (Cat6)

- Fast Media™ Cat6 UL Listed keystone tool-less jack
- Self-terminating IDC mechanism
- 22-24 AWG 110-IDC contacts
- UL94V-0 thermoplastic ABS housing
- Available in multiple colors



Sell Pack

310-150 25



BASELINE

By Steren

Cat5e Riser Bulk Cable

Designed for critical communications and high-speed networks

Call Your Sales Representative Today!

1-800-266-3333

# Network & Datacom

## In Line Coupler (Cat5e)

- Cat5e jack-jack coupler
- Joins two RJ45 cords
- Reverse configuration
- Available in ivory, black, and grey



310-039 25



## In Line Coupler (Cat6)

- Cat6 jack-jack coupler
- Joins two RJ45 cords
- Reverse configuration
- Available in white and black



310-040 25



## Keystone Cat5e RJ45 Coupler

- Cat5e jack-jack coupler for keystone
- Joins two RJ45 cords
- Reverse configuration
- Available in white and black



310-042 25



## Keystone Cat6 RJ45 Coupler

- Cat6 jack-jack coupler for keystone
- Joins two RJ45 cords
- Reverse configuration
- Available in white and black



310-043 25

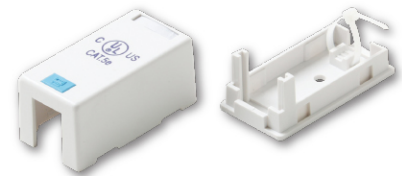


## Keystone Surface Mount - 1-Port

- Surface mount keystone empty biscuit box
- Holds industry standard modular keystone inserts
- High-impact UL94V-0 thermoplastic housing



310-161 10

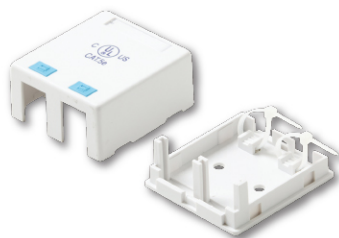


## Keystone Surface Mount - 2-Port

- Surface mount keystone empty biscuit box
- Holds industry standard modular keystone inserts
- High-impact UL94V-0 thermoplastic housing



310-162 10

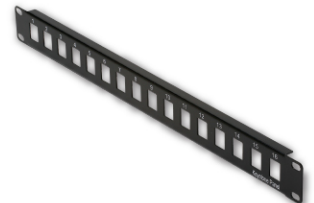


## Blank Keystone Patch Panel

- Unloaded panels suitable for any combination of coaxial, twisted-pair or fiber connectors
- Holds industry standard modular keystone inserts for custom installations



310-216 16-Port 1  
310-224 24-Port 1

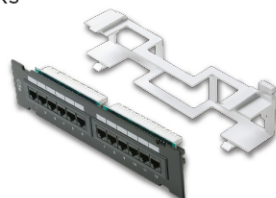


## Cat5e Patch Panel

- Cat5e UL Verified and Listed patch panel
- High-reliability printed-circuit board design
- 110-termination 22-26 AWG tin-lead contact
- UL94V-0 black ABS modular jack banks



310-320 12-Port 1  
310-324 24-Port 1  
310-348 48-Port 1  
310-356 96-Port 1



## Cat6 Loaded Patch Panel

- Cat6 UL Verified and Listed patch panel
- High-reliability printed-circuit board design
- 110-Termination 22-26 AWG tin-lead contact
- UL94V-0 black ABS modular jack banks



310-334 24-Port 1  
310-349 48-Port 1  
310-358 96-Port 1



Call: 1-800-266-3333

Specifications subject to change © Copyright 2014



Network & Datacom

21

# Network & Datacom

## 66M-IDC Type 50-Pair Wiring Block

- 50-Pair modular 66-IDC wiring block
- Flame retardant thermoplastic construction
- Quick-connect 66-IDC terminals
- Terminates solid copper wire Category-3 24AWG to Cat6 23AWG



Sell Pack

310-366

1



## Mounting Bracket for 66-IDC Type Block

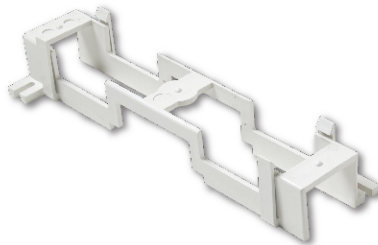
- Mounting bracket for 50-Pair modular 66-IDC wiring block
- Flame retardant thermoplastic construction



Sell Pack

310-367

1



## 110-IDC Type 50-Pair Wiring Block

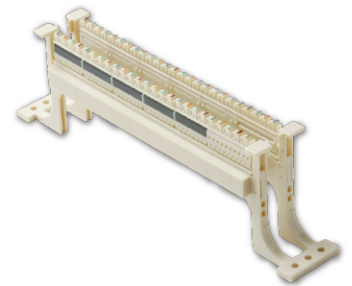
- 50-Pair modular 110-IDC wiring block
- Flame retardant thermoplastic construction
- 110-IDC terminals
- Terminates solid copper wire Category-3 24AWG to Cat6 23AWG
- Mounting bracket included



Sell Pack

310-368

1



## Bridging Clips for 66-IDC Type Block

- Bridging clip for 66-IDC wiring block
- Nickel-plated brass construction
- Bags of 100

Sell Pack

310-372

1



## Cable Distribution Ring

- Suitable for use in cable terminals, ceilings, floors, walls, backboards and other surfaces
- Die-cast aluminum construction
- Smooth, rounded edges prevent damage to insulation and jackets

Sell Pack

310-390 1-7/8" 25

310-392 3-5/8" 25

310-394 5-1/8" 25



## Wall Mount Bracket

- Wall mount bracket used for a 24 or 48 port panel
- 19" Standard with - EIA unit spacing Compliant

Sell Pack

310-601 1 x EIA 1

310-602 2 x EIA 1



## Wire Management Panel

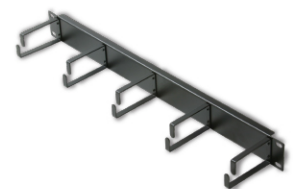
- 5-Ring low-profile cable manager
- Organizes front-rack patch cords for use on standard racks, wall brackets, or cabinet installations
- Five 1 1/2" x 4" horizontal plastic rings
- 1 x EIA Unit



Sell Pack

310-399

1





# Network & Datacom

## Cat5e UTP Molded Patch Cord

- Flush-Mold-Injected booted snagless Cat5e patch cords
- 4-Pair 24AWG-stranded copper UTP cable
- Exceeds EIA/TIA 568B
- Available in multiple colors



Sell Pack

308-601	1'	25
308-603	3'	25
308-605	5'	25
308-607	7'	25
308-610	10'	10
308-614	14'	10
308-625	25'	5
308-650	50'	5
308-600	100'	5



## Cat6 UTP Molded Patch Cord

- Ultra-high-performance data communications cable
- 4-Pair 24AWG-stranded copper UTP cable
- Exceeds Cat6 ANSI/TIA/EIA 568B.2-1 standards
- Available in multiple colors



Sell Pack

308-903	3'	25
308-905	5'	25
308-907	7'	25
308-910	10'	10
308-914	14'	10
308-925	25'	5
308-950	50'	5
308-975	75'	5



## USB 2.0 A-A Type Cable

- Premium high-speed USB 2.0 Certified cables
- Supports 1.5/12/480 Mbps transfer, hot-swappable
- Backward-compatible with USB 1.1 devices
- USB type A male to type A male connectors



Sell Pack

506-356	6'	10
506-360	10'	5
506-365	15'	5



## USB 2.0 A-Mini B Type Cable

- Premium high-speed USB 2.0 Certified cables
- Supports 1.5/12/480 Mbps transfer, hot-swappable
- Backward-compatible with USB 1.1 devices
- USB type A male to type mini B male connectors



Sell Pack

506-513	3'	10
506-516	6'	10



## USB 2.0 A-Micro B Type Cable

- Premium high-speed USB 2.0 Certified cables
- Supports 1.5/12/480 Mbps transfer, hot-swappable
- Backward-compatible with USB 1.1 devices
- USB type A male to type micro B male connectors



Sell Pack

506-113	3'	10
506-116	6'	10



## Ask Your Sales Rep About Steren USB 3.0 "SuperSpeed" Cables

Available in A-A, A-B, A-Mini B, and A male-A female

- Delivers up to 10Gbps data transfer speeds
- Improved data encoding for more efficient data transfers
- Lower active and idle power requirements
- Backwards compatible with USB 2.0 and 1.1

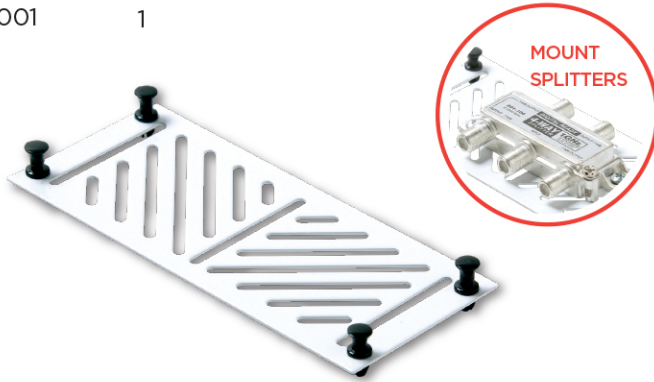


# FastHome™

## Universal Mounting Plate


- Mount splitters, multiswitches, couplers, and other devices
- Dimensions: 6 1/2" (W) x 2 3/4" (H)

550-001 Sell Pack  
1



## Telephone Hub Module


- Distributes 4 incoming phone, fax, or modem lines to 6 rooms
- RJ31X port for security system priority expandable

 Sell Pack  
550-020 1



## Data Termination Hub Module

- Centrally terminates data wires from 8 locations for distribution to switches, hubs, or routers
- Exceeds Cat5e standard TIA/EIA-568-B.2

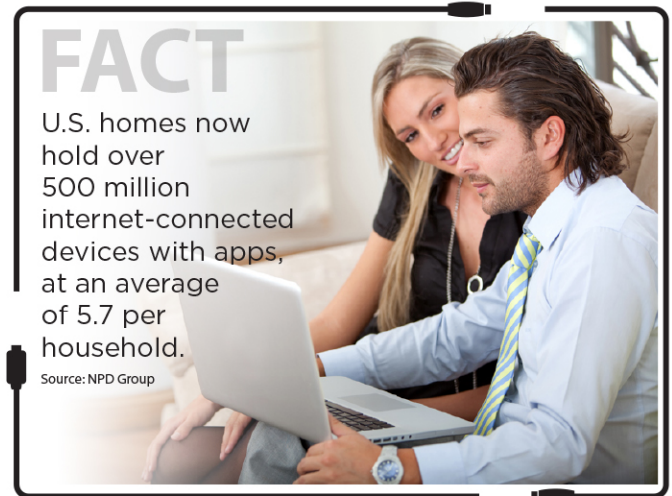
 Sell Pack  
550-030 1



## FACT

U.S. homes now hold over 500 million internet-connected devices with apps, at an average of 5.7 per household.

Source: NPD Group



## Surface Mount Enclosure

- Provides a secure, reliable control center for voice, video, and data connections
- FastHome™ modules snap into place without tools
- Standard hole spacing allows flexibility for mounting FastHome™ or similar modules

Sell Pack  
550-100 11" 1  
550-105 19" 1



## Flush Mount Enclosure

- Provides a secure, reliable control center for voice, video, and data connections
- FastHome™ modules snap into place without tools
- Standard hole spacing allows flexibility for mounting FastHome™ or similar modules

Sell Pack  
550-200 19" 1  
550-205 32" 1  
550-210 44" 1



# Power Supplies

## AC Ground Adapter - UL

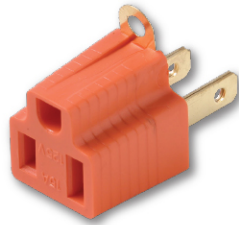
- Polarized grounding adapter
- 3-Prong outlet to 2-prong plug



Sell Pack

905-100

10



## Triple Grounding-Tap Adapter - UL

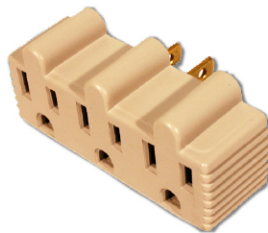
- Converts 1 AC outlet to 3 AC outlets



Sell Pack

905-110

1



## 6 Outlet Surge Strip - UL, 150 Joules

- Surge protected multiple outlet strip
- 3-Wire NEMA 5-15 grounded outlets



Sell Pack

905-106

1



## 6 Outlet Surge Strip - UL, 90 Joules

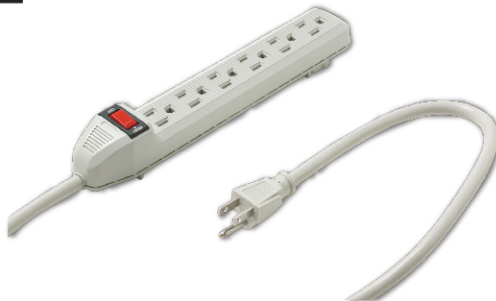
- Surge protected multiple outlet strip
- 3-Wire NEMA 5-15 grounded outlets



Sell Pack

905-109

1



## 9 Outlet Surge Strip - UL, 1500 Joules

- Surge protected multiple outlet strip
- 3-Wire NEMA 5-15 grounded outlets
- Phone, fax, modem, and TV ports



Sell Pack

905-222

1



## 3 Outlet Plug-In Surge - UL, 270 Joules

- Surge protected wall-mounted outlet
- 3-Wire NEMA 5-15 grounded outlets



Sell Pack

905-304

1



## 6 Outlet Plug-In Surge - UL, 270 Joules

- Surge protected wall-mounted outlet
- 3-Wire NEMA 5-15 grounded outlets



Sell Pack

905-307

1



# Splitters

## RF Splitter

- 5-900MHz 75Ω MATV low-cost F splitter
- Suitable for consumer MATV applications

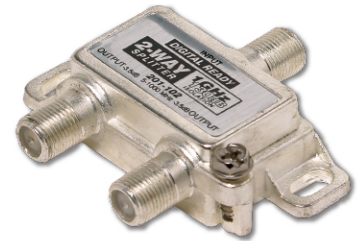
	Sell Pack
200-222 2-Way	10
200-223 3-Way	10
200-224 4-Way	10
200-206 6-Way Vertical	10
200-208 8-Way Vertical	10



## RF Digital Splitter

- Premium Broadband/CATV 1GHz 130dB digital ready 75Ω splitters
- Suitable for hybrid distribution networks, HDTV, voice, data, and modem
- Soldered-back cover 130dB min, EMI-RFI shielding


	Sell Pack
201-102 2-Way	10
201-101 3-Way Balanced	10
201-103 3-Way	10
201-104 4-Way	10
201-106 6-Way Vertical	10
201-108 8-Way Vertical	10



# Hardware

## Modular Plugs, Round Cable


- Terminates 24-26 AWG round solid cable
- High-impact clear polycarbonate plugs

	Sell Pack
300-164 RJ11 6x4	100
300-166 RJ12 6x6	100
300-168 RJ45 8x8	100
301-064 RJ11 6x4 	100



## 8x8 Round/Stranded RJ45 Cat5e Plug

- Suitable for Cat5e cable installation
- Terminates 24-28 AWG solid/stranded cable
- UL94V-0 thermoplastic ABS

	Sell Pack
 301-172	100
301-176 2-Prong	100
301-178 3-Prong	100



## 8x8 RJ45 Shielded Cat5e Plug


- Suitable for Cat5e cable installations
- Terminates 24-28 AWG solid/stranded cable
- UL94V-0 thermoplastic ABS

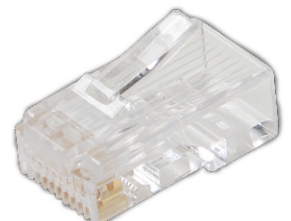
	Sell Pack
 301-182 Stranded	100
301-188 Solid, 3-Prong	100



## 8x8 RJ45 Cat6 Plug

- Suitable for all RJ45 connections
- Designed to fit round Cat6 cable
- Accepts 22-24 AWG solid copper wire

	Sell Pack
 301-191	100



## B Wire Connector

- Crimp-type bean wire connector
- Securely splices 19-26 AWG solid copper wire

Sell Pack

300-070 250  
300-077 With Gel 100



## UY Wire Connector - Yellow

- Splices 22-26 AWG wire
- Polypropylene body - yellow

Sell Pack

300-071 100



## UR Wire Connector - Red

- Splices 19-26 AWG wire
- Polypropylene body - red

Sell Pack

300-072 100



## UB Wire Connector - Blue

- Splices 22-26 AWG wire
- Polypropylene body - blue

Sell Pack

300-073 100



## UG Wire Connector - Green

- Splices 22-26 AWG wire
- Polypropylene body - green

Sell Pack

300-075 100



## Hook and Loop Cable Tie

- Hook-and-loop wire tie
- 8" length
- Easy to reopen and reclose

Sell Pack

400-858 10



## UR2 Wire Connector - Red

- Splices 19-26 AWG wire
- Polypropylene body - red

Sell Pack

300-076 100



## Cable Tie

- Self-locking tie-wrap
- Bent finger-grip tip, clear virgin nylon 6/6
- UL94V2 self extinguishing
- Bags of 100ea



Sell Pack

400-804 (18lbs) 4" 10  
400-806 (18lbs) 6" 10  
400-808 (18lbs) 8" 10  
400-812 (40lbs) 12" 10  
400-815 (40lbs) 15" 10  
400-828 (50lbs) 8" 10  
400-832 (50lbs) 12" 10  
400-835 (50lbs) 15" 10



## Electrical Tape - 60'

- Weather-resistant PVC electrical tape - 3/4" wide

Sell Pack

400-904 non-UL 10  
400-905 UL 10



# Connectors & Adapters

## F Hex Crimp Connector - RG6

- Commercial grade F series connector
- Suitable for coaxial networks used in video, data and telephony applications



Sell Pack

200-025

100



## F Crimp Connector Long Barrel

- Commercial grade F series connector
- Suitable for coaxial networks used in video, data, and telephony applications



Sell Pack

200-030 RG59

100

200-035 RG6

100



## Weatherproof F Hex Crimp Connector

- Commercial grade F series connector
- Suitable for coaxial networks used in video, data, and telephony applications



Sell Pack

200-038

100



## F Twist On Connector Gold

- Commercial grade F series connector
- Suitable for coaxial networks used in video, data and telephony applications



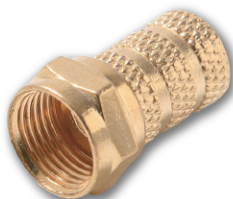
Sell Pack

200-041 RG59

100

200-043 RG6

100



## RG6 Universal Compression Connector

- One piece metal design
- Universal for 60% through Quad Shield RG6
- Meets all applicable SCTE specifications
- Weather-sealed nut seals without separate port seals or thread protectors



Sell Pack

PPC-EX6XL

50



## RCA Male Compression Connector - RG6

- One piece metal design
- Universal for 60% through Quad Shield RG6
- Meets all applicable SCTE specifications
- Weather-sealed nut seals without separate port seals or thread protectors



Sell Pack

PCT-RCA-6

50



## F Hex Crimp Connector

- Commercial grade F crimp connector
- Suitable for coaxial broadband networks used in video, data, and telephony applications
- Reliable easy-crimp, annealed-brass construction prevents rupturing or cracking



Sell Pack

200-027 RG6

100

200-033 RG6-QUAD

50

200-034 RG6, Plenum

50

200-036 RG6, Gold

100



## F Twist On Connector Short Body

- Commercial grade F series connector
- Suitable for coaxial networks used in video, data, and telephony applications



Sell Pack

200-039 RG6

100

200-040 RG59

100



## F 75-Ohm Terminator

- Commercial grade F-series adapter
- Suitable for coaxial networks used in video, data, and telephony applications



Sell Pack

200-075

100



# Connectors & Adapters

## F L-Adapter Jack-Plug

- Commercial grade L-adapter
- Suitable for coaxial networks used in video, data, and telephony applications



Sell Pack

200-107

50



## F Coupler Jack-Jack

- Commercial grade F series adapter
- Suitable for coaxial networks used in video, data, and telephony applications



Sell Pack

200-050

100

200-051 Gold

100



## F Coupler Jack-Jack Panel Mount

- Commercial grade F series adapter
- Suitable for coaxial networks used in video, data, and telephony applications



Sell Pack

200-053

50



## F-Jack to RCA-Plug Adapter

- Black molded plastic construction
- Gold-plated contacts



Sell Pack

200-110

50



## RCA Hex Crimp Connector - RG59, 2 Piece

- RCA plug crimp RG59
- 1/4" ring



Sell Pack

200-060

100



## BNC Hex Crimp Connector Kit 75 Ohm, 2 Piece

- BNC Connector Crimp Kit
- 75  $\Omega$  BNC Crimp Kit
- Nickel-plated connector bodies, ferrules and washers
- Delrin dielectric
- Gold-plated center contacts



Sell Pack

200-123

25



## BNC Plug Crimp-On - RG59, 2 Piece

- Commercial grade BNC series connector
- Suitable for video and headend applications



Sell Pack

200-131

25



## BNC Hex Crimp Connector - RG6, 2 Piece

- Commercial grade BNC series connector
- Suitable for video and headend applications



Sell Pack

200-139

25



## F-Jack to BNC-Plug Adapter

- Commercial grade BNC series adapter
- Suitable for video and headend applications



Sell Pack

200-130

25



# Tools & Testers

## Universal F-Fitting Compression Tool

- Universal F-fitting compression tool
- Red rubberized grip handles



Sell Pack

204-001

1



## Universal Compression Tool RG11 F Only

- Universal RG11 F-fitting compression tool
- Yellow/black rubberized grip handles



Sell Pack

204-031

1



## Universal Compression Tool RG6/59 F/BNC/RCA

- Universal compression tool terminates F, RCA, and BNC fittings
- Yellow/black rubberized grip handles



Sell Pack

204-036

1

204-034

1

(Replacement 3-Piece Die Kit)



## 9" Hex Crimp Tool

- Hex crimp tool for RG58, RG59, RG62, and RG6 coaxial fittings
- Black oxide finish



Sell Pack

204-005 4-Die

1

204-009 2-Die

1



## Rotary Coax Stripping Tool

- Precision coaxial cable stripper for RG58, RG59, RG62, and RG6
- Adjustable 2 or 3-blade construction



Sell Pack

204-202

1



## Rotary Coax Stripping Tool

- Precision coaxial cable stripper for RG58, RG59, RG62, and RG6
- Adjustable 2-blade construction



Sell Pack

204-205

1



## Folding Cable Caddy

- Increases ease and efficiency of installing cables
- Holds up to 1000' cable reels
- Folds neatly for storage and transport

Sell Pack

204-407

1



## Tubular Cable Caddy

- Increases ease and efficiency of installing cables
- Holds up to 1000' cable reels
- Built-in carrying handles for ease of transport

Sell Pack

204-408

1



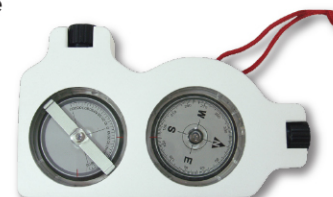
## Compass / Clinometer

- Essential tool for site surveys and dish antenna installation
- Clinometer in degrees and percentage
- Compass with reverse scale for azimuth readings
- Adjustable eyepieces for both
- Includes protective carrying case

Sell Pack

203-661

1





# Tools & Testers

## Ethernet Cable Tester RJ45 and BNC

- 4-Pair twisted pair and coaxial cable tester
- Tests local or installed cable with removable RJ45-BNC unit
- LEDs visually indicate good/faulty connections

300-100 Sell Pack  
1



## Pocket Toner

- Traces runs, identifying shorts, and confirming DC continuity in audio, video, voice, and data cables

Sell Pack  
203-550 1



## Economy Modular Plug Crimp Tool for Handset/RJ11/45

- Economy tool for handset, RJ11, RJ45 plugs
- Suitable for 4x4, 6x4, 8x8 Plugs
- Built-in cutting-stripping blade

300-508 Sell Pack  
1



## Modular Plug Crimp Tool for RJ11/12/45

- Crimp tool for RJ11, RJ12, and RJ45
- Suitable for 6x4, 6x6, and 8x8 plugs
- Black oxide finish

Sell Pack  
300-568 1



## Ratchet Modular Plug Crimp Tool for RJ11/12/45

- Ratchet-style crimp tool for RJ11, RJ12, RJ45
- Suitable for 6x4, 6x6, 8x8 plugs
- Black oxide finish

Sell Pack  
300-574 1



## IDC Impact Punch-Down Tool

- Spring-loaded adjustable impact
- Terminates and cuts conductors on 110/88 or 66 blocks
- Blades supplied separately

Sell Pack  
300-650 1



## Punch-Down Tool with Hook

- Spring-loaded adjustable impact
- Terminates and cuts conductors on 110/88 or 66 Blocks
- Blades supplied separately

Sell Pack  
300-653 1



## Punch-Down Blade 66-Type Block

- Reversible punch or punch-and-cut

Sell Pack  
300-670 Use with 300-650 1  
300-672 Use with 300-653 1



## Punch-Down Blade 110/88-Type Block

- Reversible punch or punch-and-cut

Sell Pack  
300-675 Use with 300-650 1  
300-677 Use with 300-653 1



# Tools & Testers

**FACT**

In 2014, the global consumer electronics market is forecasted to have a value of \$289.5 billion.

Source: MarketResearch.com



## Auto/Manual LCD Digital Multimeter

- Digital adjustable-display DMM
- 1" High-contrast LCD display
- 30-Position rotary range-switch
- Diode and 50Ω continuity beeper
- Overload protected - data-hold switch
- Transistor, voltage, input impedance, current, capacitance, resistance tester
- 36" 1500V double-insulated test leads

Sell Pack

602-040 1



## Pocket Size LCD Digital Multimeter

- Digital pocket DMM
- 3/4" LCD display
- Diode and 50Ω continuity beeper
- Overload protected
- Voltage, input impedance, current, and resistance tester
- 18" Wrap-around test leads

Sell Pack

602-070 1



## Digital Mini Clamp-on Amp Meter

- Digital and analog backlit LCD display
- 42-Segment fast analog bar graph
- Display and audio continuity test
- Diode test - auto Power Off
- Voltage, current, and resistance tester
- 18" Test leads

Sell Pack

602-115 1



## Auto-Range LCD Digital Multimeter

- Digital auto-range DMM
- 5/8" High contrast LCD display
- 33-Segment fast analog bar graph
- Diode and 50Ω continuity beeper
- Transistor, frequency, capacitance, voltage, input impedance, current, and resistance tester
- 36" 1500V double-insulated test leads

Sell Pack

602-270 1



## Tone and Probe Line Tracer Kit

- Cable locator tone-test set
- Amplifier probe and tone generator

Sell Pack

602-810 1



## Universal Cable Stripper and Cutter Tool

- Telecom cable stripper and cutter
- Suitable for 26 AWG-9.5m
- Cleanly strips UTP, coax, flat cables
- Cable stops for precise strip lengths



Sell Pack

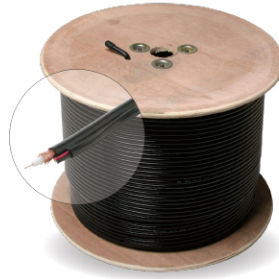
993-750 1



# Bulk Cable

## RG59 18/2 CCTV - UL, 500'

- 500' RG59 coaxial CCTV-cam cable with 2-conductor power-limited cable
- Suitable for CCTV installations
- 20AWG solid copper center conductor
- Copper braid shield, 95% coverage
- 2-Conductor 18 AWG stranded copper
- NEC Type CM, CL3



Sell Pack

200-915 1

## RG6/U CCS Conductor - 1000'

- High-grade RG6/U coaxial cable
- Suitable for digital HDTV applications, CATV, and satellite installations
- Fully sweep tested to 3GHz
- 18AWG / 60% Aluminum braid shield



Sell Pack

200-927 Non-UL, Reel in Box 1  
 200-929 UL, Spool  1  
 200-931 UL, Reel in Box  1



## RG6/U Solid Copper Conductor - UL, 1000'

- High-grade RG6/U coaxial cable
- Suitable for digital HDTV applications, CATV, and satellite installations
- Fully sweep tested to 3GHz
- 18AWG / 60% Aluminum braid shield



Sell Pack

200-933 1



## RG6/Quad CCS Conductor - UL, 1000'

- High-grade RG6 quad shield coaxial cable with CCS conductor
- Suitable for digital HDTV applications, CATV, and satellite installations
- Fully sweep tested to 3GHz
- 18AWG solid conductor / 60% + 40% braid coverage



Sell Pack

200-937 1



## RG6/U CCS Conductor - 1000'

- Commercial grade RG6/U coaxial cable
- Suitable for digital HDTV and CATV applications
- Fully sweep tested to 1GHz
- 18AWG / 45% aluminum braid shield



Sell Pack

200-923 Spool 1



## CL3 Stranded Audio Speaker Cable - UL, 500'

- Professional-grade audio cable for exceptional performance
- Ideal for digital/analog speaker and home theater systems
- Superior quality stranded copper conductors
- High-strand count wire for excellent audio signal transfer
- NEC Type CL3



Sell Pack

255-932 16/2 1  
 255-934 16/4 1  
 255-936 18/2 1



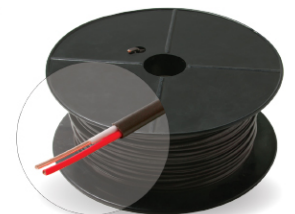
## UV/Sun Resistant Thermostat Cable CL2

- Excellent for thermostats, HVAC controls, heat pumps, intercom systems, doorbells, alarms, and other power-limited applications
- Solid copper conductors
- OSHA acceptable



Sell Pack

300-722 500' 20AWG/2C 1  
 300-724 500' 20AWG/4C 1  
 300-752 500' 18AWG/2C 1  
 300-753 500' 18AWG/3C 1  
 300-754 500' 18AWG/4C 1  
 300-755 250' 18AWG/5C 1  
 300-756 250' 18AWG/6C 1  
 300-757 250' 18AWG/7C 1  
 300-758 250' 18AWG/8C 1



# Bulk Cable

## Solid Station Wire - 24AWG/4C, 1000', Beige

- Suitable for single-line telephone and intercom/PA systems
- 24 AWG solid conductors, non-twisted pair



Sell Pack

300-741 1



## Signal/Control Cable

- Excellent for intercom systems, doorbells, alarms, and other power-limited applications
- Suitable for residential and commercial use
- 22 AWG copper conductors



Sell Pack

300-732 22AWG/2C, stranded 1  
 300-734 22AWG/4C, stranded 1  
 300-735 22AWG/2C, solid 1



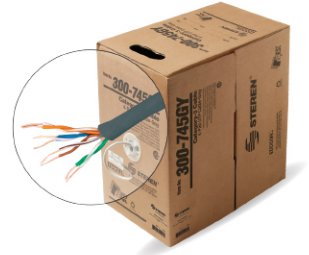
## Cat3 Cable - 24AWG, 1000'

- Unshielded twisted pair (UTP) voice grade communications cable
- Suitable for telephone and security systems
- 24AWG solid copper conductors
- Flame retardant PVC jacket
- Suitable for indoor installations
- NEC Type CM



Sell Pack

300-745 4-Pair 1  
 300-746 3-Pair 1  
 300-747 2-Pair 1



## Cat5e Cable

### BASELINE - Cat5e UTP CMR Cable - 4 Pair, UL

- Cat5e unshielded twisted pair (UTP) cable
- Swept to 350MHz
- Solid annealed bare copper conductors
- Suitable for indoor installations
- Exceeds EIA/TIA 568, UL, CSA and ISO/IEC 11801 specifications
- NEC Type CMR (Riser)



Sell Pack

13908 Beige 1  
 13909 Black 1  
 13910 Blue 1  
 13911 Green 1  
 13912 Grey 1  
 13913 Red 1  
 13914 White 1  
 13915 Yellow 1



### Cat5e UTP Cable

- Cat5e unshielded twisted pair (UTP) cable
- Swept to 350MHz
- 24AWG solid annealed bare copper conductors
- Suitable for indoor installations
- Exceeds EIA/TIA 568 UL, CSA, and ISO/IEC 11801 specifications
- Available in multiple colors



Sell Pack

300-783 Pull Box 1  
 300-784 Reel in Box 1



300-781 Pull Box 1



300-793 Pull Box 1



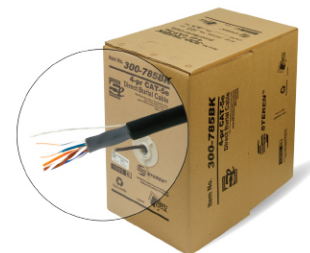
### Cat5e UTP Cable - 24AWG, 4 Pair, 1000', Direct Burial

- Direct burial, powder filled Cat5e unshielded twisted Pair (UTP) cable
- Swept to 350MHz
- 24AWG solid annealed bare copper conductors
- Exceeds EIA/TIA 568, UL, CSA, and ISO/IEC 11801 specifications






Sell Pack

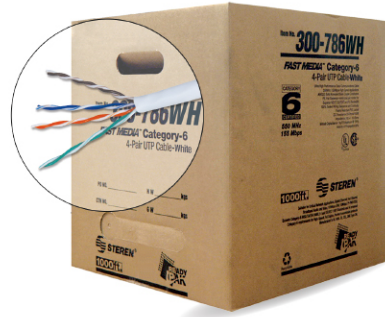
300-785 1



## Cat6 UTP Cable

- Cat6 unshielded twisted pair (UTP) cable
- Swept to 550MHz
- 23AWG solid annealed bare copper conductors
- Suitable for indoor installations
- Exceeds EIA/TIA 568 UL, CSA, and ISO/IEC 11801 specifications
- Available in multiple colors

Product	Sell Pack
CM  300-786 Reel in Box	1
CMR (Riser)  300-789 Reel in Box	1
CMP (Plenum)  300-796 Reel in Box	1

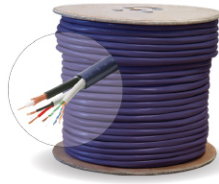


## Bundled Cable

### Cat5e + 18AWG/2C + RG59 Bundled Cable - 1000', UL

- Cable solutions for whole home voice-video-data
- Carries multiple services in one easy to install cable
- 20AWG solid RG59 coax
- 24AWG 4-Pair Cat5e UTP cable
- 18/2 speaker/power limited circuit cable
- NEC Type CM

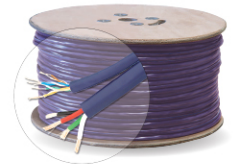
Product	Sell Pack
 300-669	1



### Cat5e + 16AWG/4C Siamese Cable - 500', UL


- Cable solutions for whole home voice-video-data
- Carries multiple services in one easy to install cable
- 24AWG 4-Pair Cat5e UTP cable
- 16/4 speaker/power limited circuit cable
- NEC Type CM

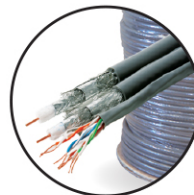
Product	Sell Pack
 300-770	1



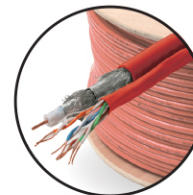
### Cat5e/RG6 Quad Cable

- Cable solutions for whole home/voice/video/data
- Carries multiple services in one easy to install cable
- 18AWG RG6/Quad Shield coaxial cable
- 24AWG 4-pair Cat5e (UTP) cable
- NEC Type CM

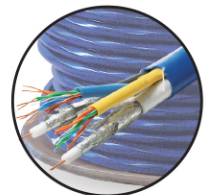
Product	Sell Pack
 300-771 1 Cat5e / 2 RG6 Quad Spool	1
300-772 1 Cat5e / 1 RG6 Quad Spool	1
300-774 2 Cat5e / 2 RG6 Quad spool	1



300-771



300-772

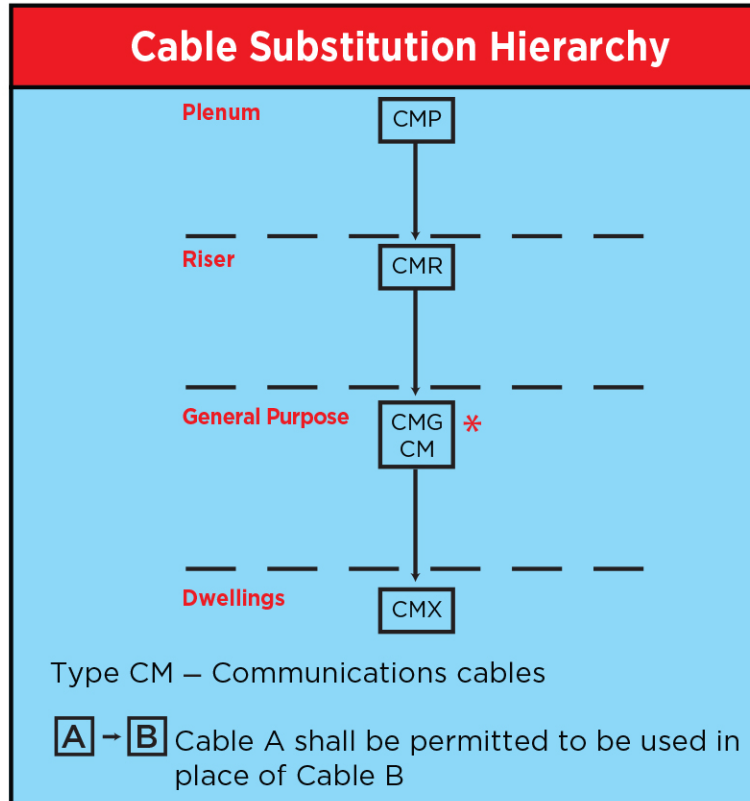


300-774

# NEC/CEC Substitution Chart

Free Resistance Level	Test Requirement	NEC Article			
		800	725	760	820
<b>(Highest) Plenum Cables</b>	NFPA 262 (Steiner Tunnel) CSA-CMP (Steiner Tunnel)	CMP	CL3P CL2P	FPLP	CATVP
<b>Riser Cables Multiple Floors</b>	UL-16666 (Vertical Shaft) CSA-CMG (Vertical Tray)		CL3P CL2P	FPLP	CATVR
<b>General Purpose Cables</b>	UL-1581 (Vertical Tray)	CMG	CL3	FPL	CATV
<b>(Lowest) Residential Cables Restricted Use</b>	CSA-CMG (Vertical Tray) UL-1581 VW-1	CMX	CL2 CL3X		CATVX

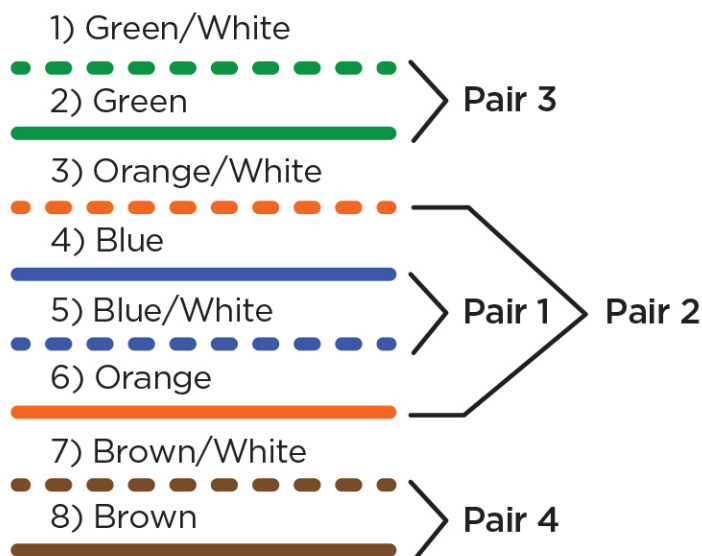
Cable Type	Use	Reference	Permitted Substitutions
<b>CMP (FT-6)</b>	Communications plenum cable	800-53(a)	
<b>CMR (FT-4)</b>	Communications riser cable	800-53(b)	CMP
<b>CMG (FT-4) CM (FT-1)</b>	Communications general purpose cable	800-53(c)	CMP, CMR, MPG, MP
<b>CMX (FT-1)</b>	Communications cable, limited use	800-53(d)	CMP, CMR, CMG, CM



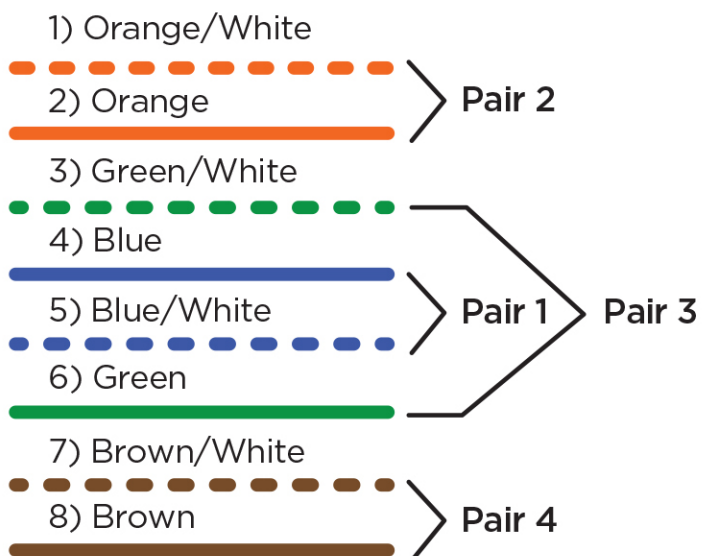
\*CMG can be substituted CM—CM can be substituted for CMG

# Network Cable Wiring Diagram

## EIA/TIA 568A



## EIA/TIA 568B



Stranded Center Conductor			
AWG	Stranding	Diameter (In)	Diameter (mm)
36	7/44	0.0060	0.1524
34	7/42	0.0075	0.1905
32	7/40	0.0080	0.2032
30	7/38	0.0120	0.3048
28	19/40	0.0160	0.4064
26	10/36	0.0210	0.5334
24	7/32	0.0240	0.6096
22	7/30	0.0300	0.7620
20	10/30	0.0350	0.8890
18	7/26	0.0480	1.1219
16	7/24	0.0600	1.5240
14	7/22	0.0730	1.8542
12	7/20	0.0960	2.2438

Solid Center Conductor		
AWG	Diameter (In)	Diameter (mm)
36	0.0050	0.1270
34	0.0063	0.1600
32	0.0080	0.2032
30	0.0100	0.2540
28	0.0126	0.3200
26	0.0159	0.4039
24	0.0201	0.5105
22	0.0254	0.6452
20	0.0320	0.8128
18	0.0403	1.0236
16	0.0508	1.2903
14	0.0641	1.6281
12	0.0808	2.0523

Steren Electronics International, LLC  
6920 Carroll Road, Suite 100  
San Diego, CA 92121



## Ask Your Sales Representative About:

- Custom Kitting Solutions
- Custom Packaging Solutions
- Retail Ready Solutions



Steren Electronics International, LLC

800.266.3333 | [sales@steren.com](mailto:sales@steren.com) | [www.sterenusa.com](http://www.sterenusa.com)

Specifications subject to change © Copyright 2014

