

Pyrotek®

manufacturing quietness



ROOM ACOUSTICS SUMMARY

SOUNDPROOFING SOLUTIONS

The **Echohush range** combines acoustics and aesthetics, maximising noise energy reduction by absorption, improving acoustics in rooms and enclosed spaces while providing strong visual qualities to suit any decor. Echohush products reduce noise in high energy spaces such as restaurants, public areas, hallways, showrooms, corridors, home theatres, home audio, sports halls, kindergartens, lecture theatres, recording studios, office receptions, open plan offices, bars, church halls, science school rooms, cinemas, work areas, call centres, music rooms, nightclubs, practice rooms, public spaces or where enhanced privacy is needed.

Full technical details available on our website pyroteknc.com

ECHOHUSH
METRO



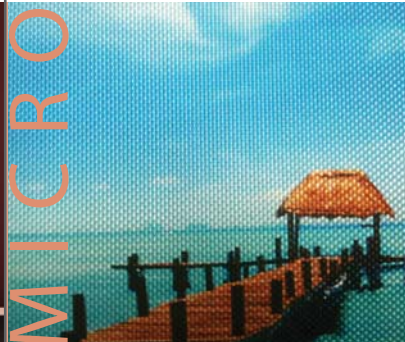
SORBERTEXTILE LINERS
P44FR AND STA



ECHOHUSH
PANEL



SORBERSCREEN
MICRO



ECHOHUSH
PROFILE



ECHOHUSH
BASS TRAPS

ECHOHUSH
COSMO

ECHOHUSH
BOARD

ECHOHUSH
BAFFLES

REAPOR



BASS TRAP



COSMO



BOARD



BAFFLE



REAPOR

3

ECHOHUSH

METRO

Christchurch Boys High School NZ

ECHOHUSH

METRO

The METRO range combines acoustics and aesthetics, maximising noise energy reduction by absorption, improving acoustics in rooms and enclosed spaces while providing strong visual qualities to suit any decor. Recommended for high energy spaces, such as cafes & bars and to give audio and voice clarity to highly reflective areas.

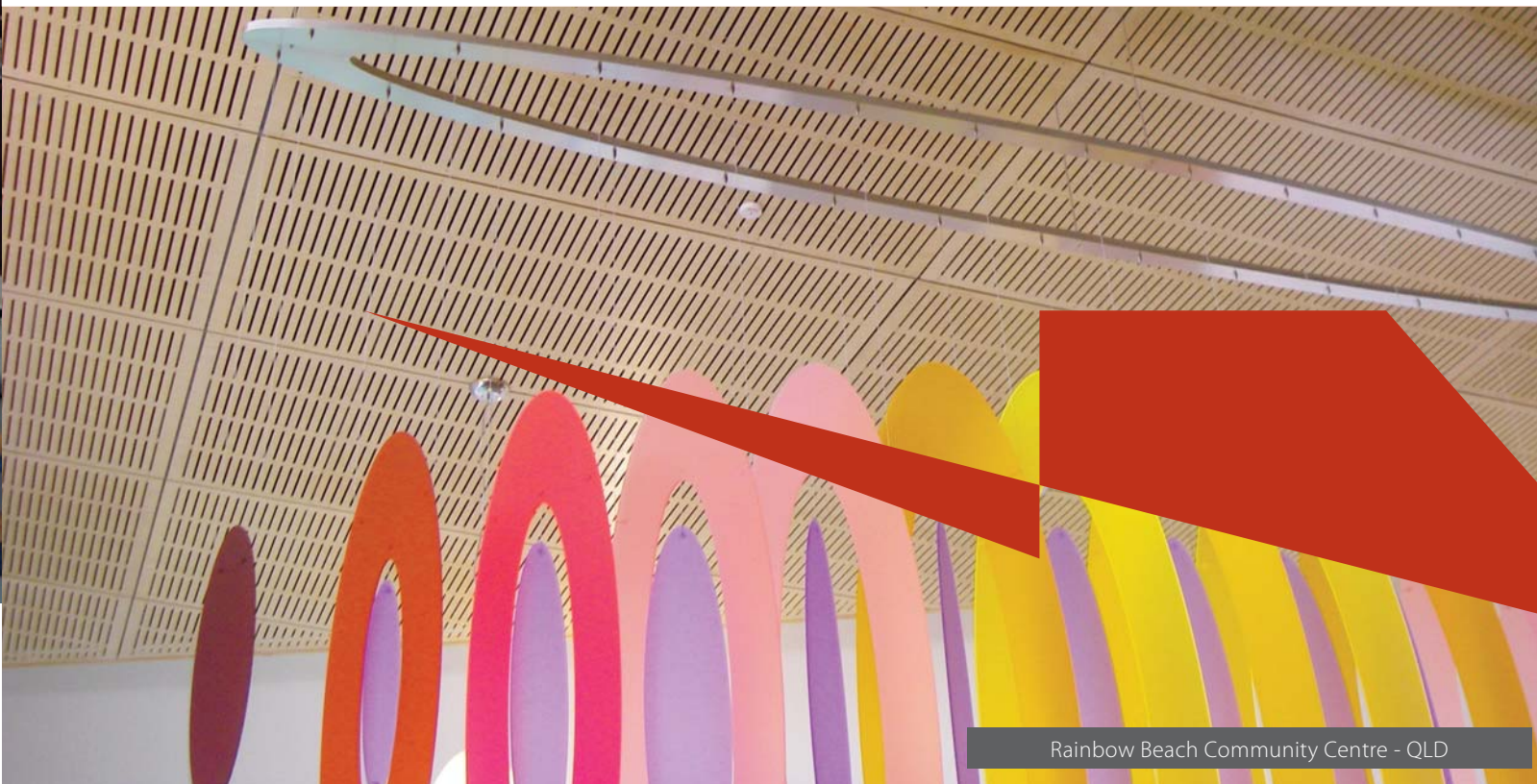
The panels are manufactured from Medium Density Fibreboard (MDF). MDF board is robust, easily installed and fitted. Decorative slots in the panel allow the acoustic cavity infill to absorb noise energy, improving room acoustics by controlling reverberation.

Music Room - Auckland NZ



SORBERTEXTILE

LINERS PF44 AND STA



Rainbow Beach Community Centre - QLD

Retail space - Christchurch NZ

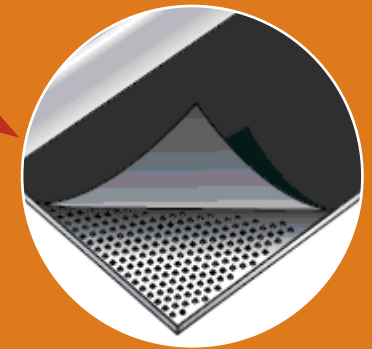


Office fitout - Melbourne CBD VIC



SORBERTEXTILE LINERS are predominantly designed for installation behind perforated panels to provide a good sound absorption, elegant appearance and to prevent fibre release from bulk materials like polyester blanket, rockwool or fibreglass, which might be used for further boosting of the acoustic properties.

It is supplied ready for use with a pre-applied adhesive backing to allow attachment to any type of perforated panel system.



ECHOHUSH

PANEL

5

ECHOHUSH
PANEL

ECHOHUSH PANEL is a high performance semi rigid polyester base acoustic panel that allows for maximum flexibility in applications and finished solutions.

Its excellent acoustic performance will improve privacy in open office environments, reduce reverberated sound, and assist in controlling background noise thereby reducing cross-talk in open plan areas and improving speech intelligibility.

Many textiles can be laminated to this cost effective panel to suit home, commercial, education and retail interiors.





SORBERSCREEN

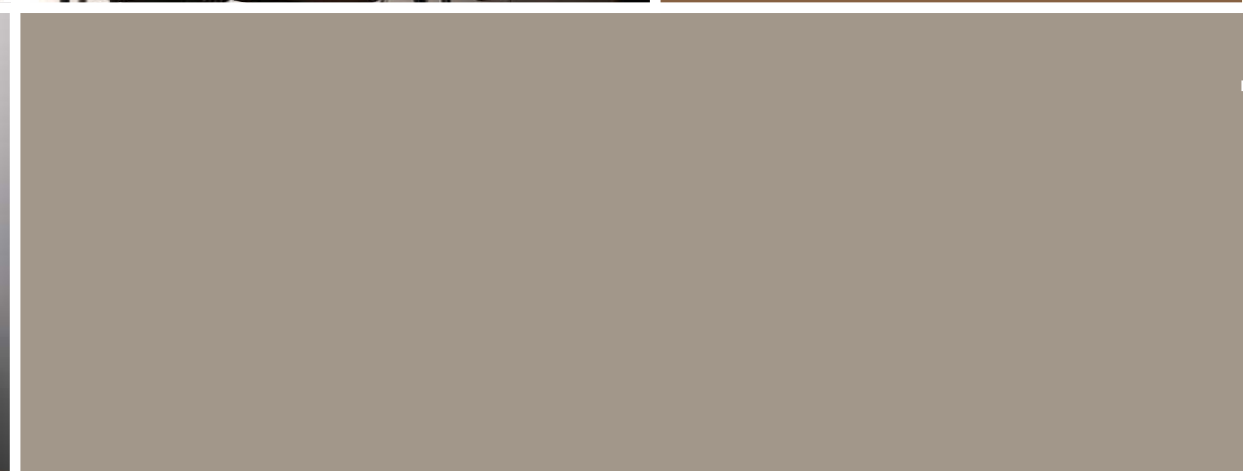
MICRO



SORBERSCREEN MICRO is a unique, microperforated metal sound absorber. It eliminates the need for flow resistive textile backing, as used on conventional perforated metal screen products.

Sorberscreen Micro has a hard durable finish consisting of 1mm aluminium, with subtle aesthetic appeal, which could be mistaken for fabric. It is the perfect finish for sound absorption in architectural and marine walls, ceilings, and absorptive panel applications.

It is available in a single standard thickness and can be easily printed or anodised to a range of colours.





First State Super Reception Area - Sydney CBD NSW



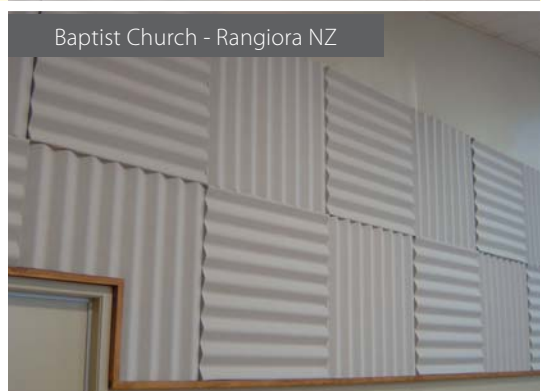
Unysis - Sydney

ECHOHUSH PROFILE panels improve home entertainment and surround systems, with a reduction in conflicting echo, creating a neutral audio environment for clear, pure sound for professional audio reproduction.

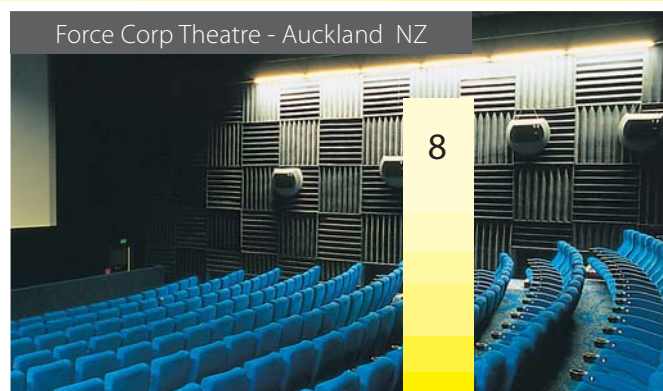
They are a specially custom coated, combustion modified acoustic foam panels that reduce noise levels in high-energy spaces such as cafes and bars, and improve voice clarity in key communication rooms.

ECHOHUSH

PROFILE



Baptist Church - Rangiora NZ



Force Corp Theatre - Auckland NZ

ECHOHUSH

BASS TRAPS

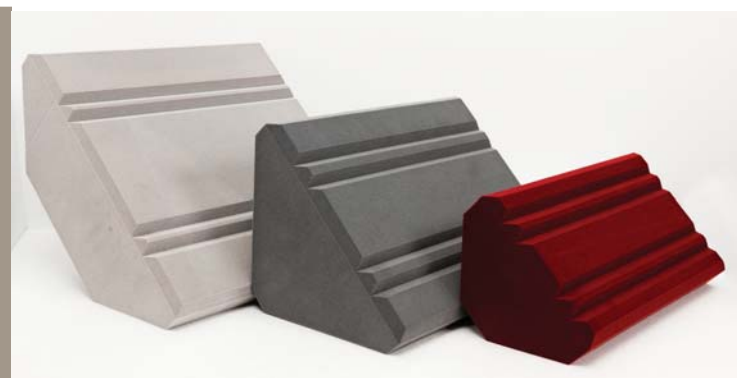
9



ECHOHUSH BASS TRAPS are acoustic foam absorbers made from combustion modified foam that are tuned to absorb lower frequencies.

The panels absorb low frequencies preventing them from reflecting back into the room, thereby controlling standing waves that can generate low frequency 'boomy' noise.

Controlling reflected sound energy creates a better bass response in the room, offering a neutral audible environment making the panels a preferred choice in recording studios and home theatres.





Advitech Reception - Newcastle NSW

ECHOHUSH COSMO



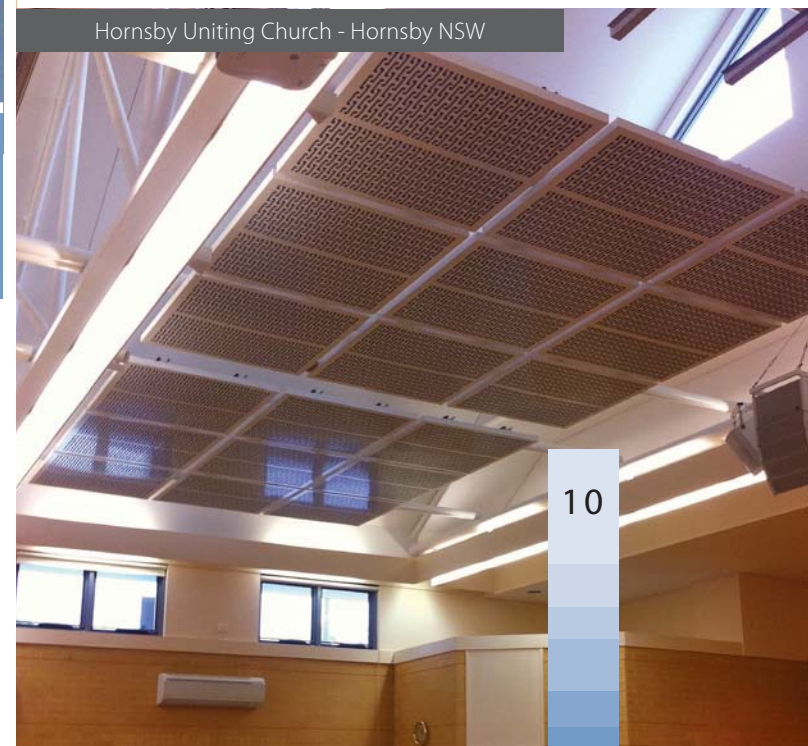
Black Lime Restaurant - Ringwood VIC

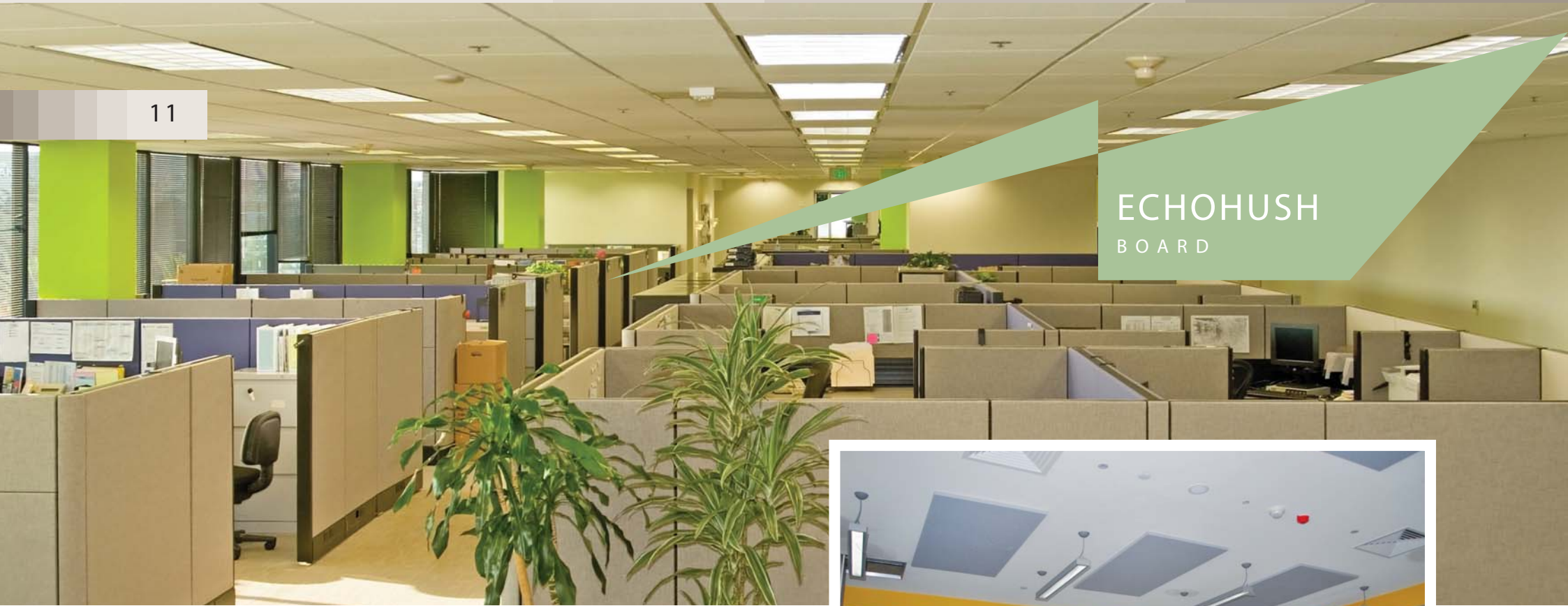
ECHOHUSH COSMO panels combine acoustics and aesthetics, maximising noise energy absorption, improving acoustics in rooms and enclosed spaces while providing strong visual qualities to suit any decor.

These metal panels are created by using the latest technology in fabricating decorative panels. Having the panels slotted allows energy to be absorbed into the inner medium, combined with a durable fire resistant decorative metal surface make these panels the ideal choice for areas with high reverberation and high fire requirements.

The panels are formed in a three dimensional profile to enhance the aesthetic appeal and are able to be painted or powder coated. Cosmo panels can easily be mounted to any substrate, installed like a picture on the wall.

Hornsby Uniting Church - Hornsby NSW



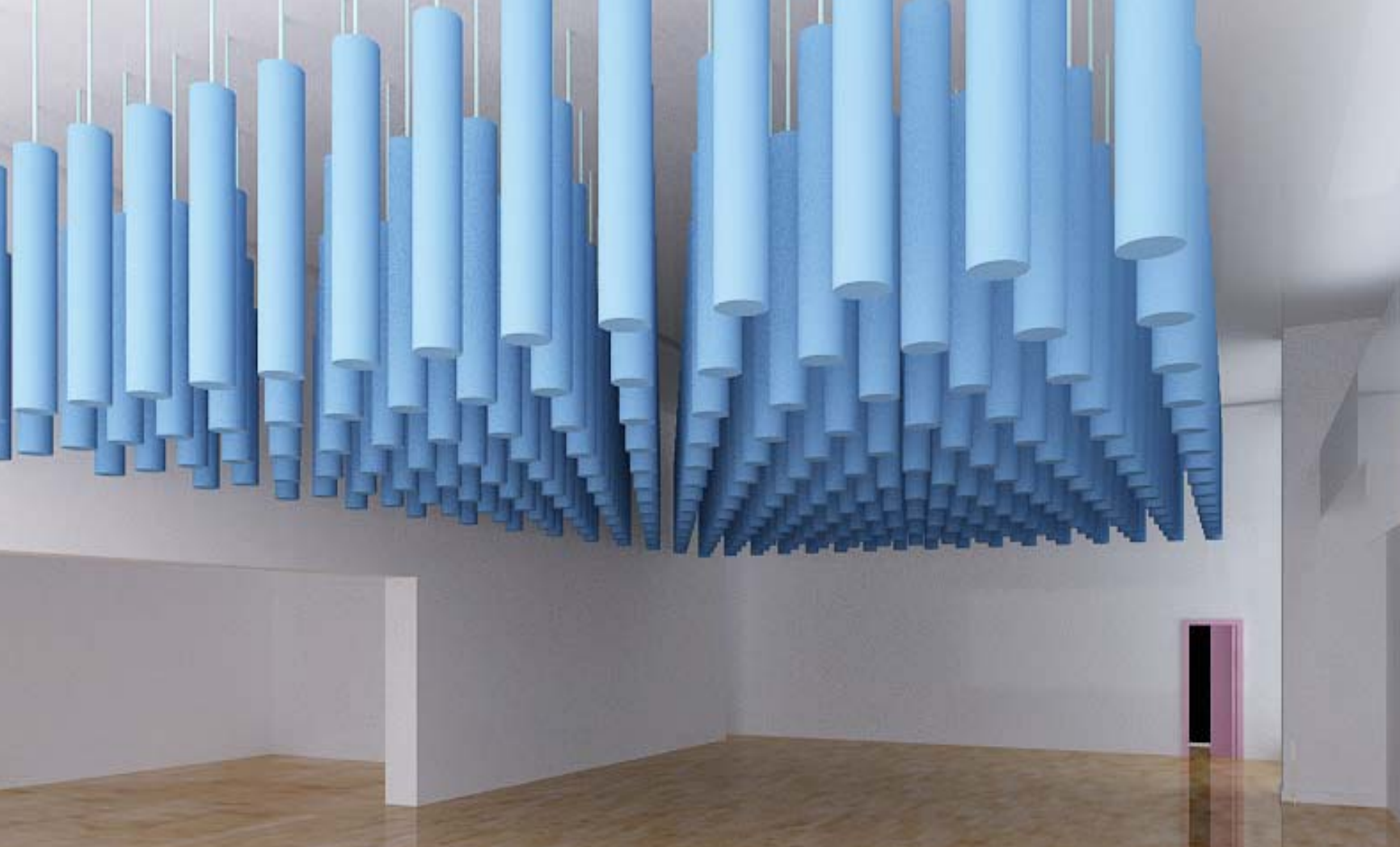


ECHOHUSH BOARD is a high-density material manufactured from 100% polyester fibres, ideally suited for office screen manufacture, partition dividers. It also serves perfectly as a pin board.

It's an acoustic base, lightweight, semi-rigid panel that allows for maximum flexibility in applications and finished solutions. Due to its composition, it is completely safe, nontoxic, non-allergenic and non-irritant. A wide range of colour choices and fabric types are available.



Victoria University - Melbourne VIC



ECHOHUSH BAFFLES offer design flexibility and exceptional acoustical properties. Thanks to a wide range of variations and materials, Echohush Baffle is an absorber for a wide range of frequencies. As well as offering plenty of possibilities for architects and designers, it also comes in a variety of base materials.

ECHOHUSH

BAFFLES



Rocco's Restaurant - Sydney NSW



13

REAPOR

Greenacres Golf Club - VIC

REAPOR

Queens Hotel - Enmore NSW



REAPOR was developed to maximise noise energy absorption, and resolves issues of fire, weather aging and contamination damage. Simply maintained, constructed from recycled material, and volatile organic compounds (VOC) free, Reapor panels are easily fixed and worked.

Reapor uses recycled glass as its core component, and by nature is sensitive to the environment. During manufacturing, the glass is processed to form expanded granules. Each granule acts as an acoustic absorber in its own right. Reapor has a wide range of applications where effective noise reduction is required in outdoor applications or indoor areas of high humidity or fire concerns. Its natural resistance to moisture ensures it will not significantly retain or absorb moisture, unlike traditional porous or open-cell materials.

Reapor panels are bonded using adhesive or mechanically fixed depending on the application and substrate. The panels can be machined and processed using standard wood working equipment and dust protection. Reapor panels can be easily painted with water based paint, rendered for a seamless finish or routed to provide varying texture and shadowing effects.



Neapoli Restaurant - Melbourne VIC



PYROTEK NOISE CONTROL WORLDWIDE LOCATIONS

AUSTRALIA

CANADA

CHINA

CZECH REPUBLIC

HONG KONG

INDIA

INDONESIA

JAPAN

KOREA

MALAYSIA

SINGAPORE

NEW ZEALAND

TAIWAN

THAILAND

TURKEY

UNITED ARAB EMIRATES

UNITED KINGDOM

UNITED STATES OF AMERICA

VIETNAM



Check our Information Pages for product specific details via our website www.pyroteknc.com. Find products by using the 'Quick Navigation by Product' or request information through our 'Contact us' page.

CONTACT DETAILS

for further information and contact details, please visit our website at pyroteknc.com

pyroteknc.com/contact-us

Pyrotek endorse forest sustainability and the preservation of natural environment. We procure the highest quality materials from suppliers who hold FSC (Forest Stewardship Council) Certification and PEFC (Programme for the Endorsement of Forestry Certification) amongst other certification programmes.

Caveats: Specifications are subject to change without notice. The data in this document are typical of average values based on tests by independent laboratories or by the manufacturer and are indicative only. Materials must be tested under intended service conditions to determine their suitability for purpose. The conclusions drawn from acoustic test results are as interpreted by qualified independent testing authorities. Nothing here releases the purchaser/user from responsibility to determine the suitability of the product for their project needs. Always seek the opinion of your acoustic or mechanical engineer on data presented by the manufacturer. Due to the wide variety of individual projects, Pyrotek is not responsible for differing outcomes from using their products. Pyrotek disclaims any liability for damages or consequential loss as a result of reliance solely on the information presented. No warranty is made that the use of this information or of the products, processes or equipment to which this Information Page refers will not infringe any third party's patents or rights.

DISCLAIMER: This document is covered by Pyrotek standard Disclaimer, Warranty and © Copyright clauses. See pyroteknc.com/disclaimer.