



Specified Item #	
Project	
Location	

The most realistic Fiber Optic Star Ceiling for your bedroom, bathroom, Home Theater, luxury yacht or any other romantic place to create a magical ambiance.

Fusion Synergy's Arya fiber optic panels are the newest technology in RGBW digital star lighting. "Admiring the night sky can be even more enjoyable indoors with the use of our star ceiling Panel".

Provide your clients the ultimate effect in ceiling design with star clusters and shooting stars with the convenience of clean and simple installation.

Sparkling pin points of light appear through fabric wrapped fiberglass panels. Star Panels can be customized by shape, size, quantity and patterns of light per panels.

Unlimited selection of light patterns are available from a random spacing as in a star field to custom designs and pictures. Light can move, pulse, sequence or alternate to provide unique effects or can simply appear together. Panels may also be used in ceilings, walls for accent panels, limousines or other custom applications. Custom finishes to accent all color scenes. Custom sizes available. Special color effects can be achieved by using colored LEDs.

Arya's Fiber Optic Ceiling Panels is a plug 'n' play acoustical ceiling tile system that is simple to install and adds illumination to any high-end ceiling. With both a drop tile ceiling and surface mount systems. Premium acoustics, LED technology, labor savings, and sheer beauty are just some of the benefits you will experience.

FEATURES

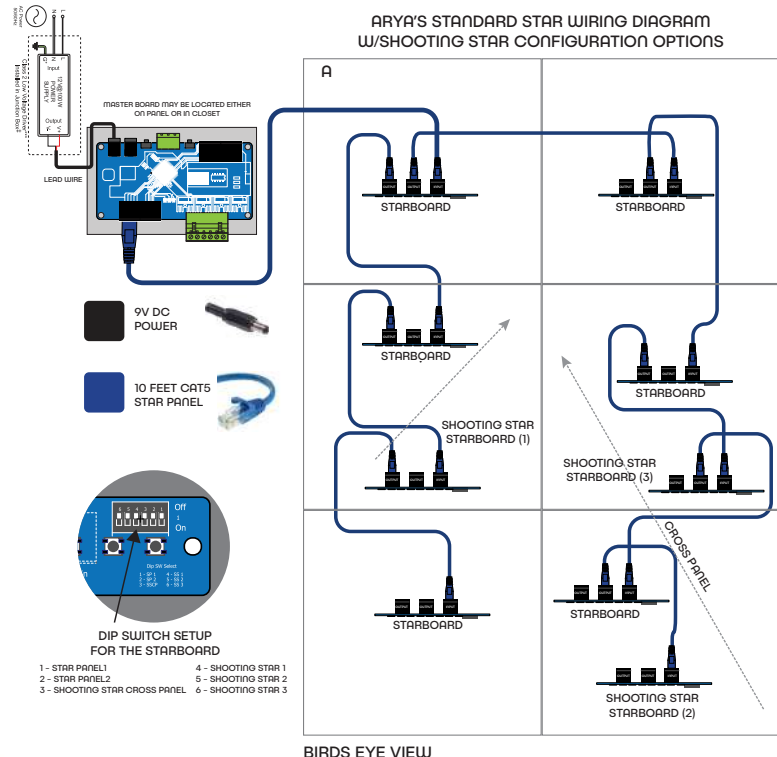
- UL fire rated material.
- Controlled via Bluetooth or Wifi app (Alex/Google Home) or RS232
- Consists of a simple anchoring system included.
- 12 - 24V System
- Realistic Star effect.
- RGBW color changing fiber effects
- 6 fiber scenes
- RGBW strip light port for cove or accent lighting

TECHNICAL INFORMATION

Size: 2' x 2', 2'x4', 4' x 4', 4' x 6' and 4' x 8' feet
 Thickness: 1" inch
 Colors: Guilford of Main - Black or Midnight Blue
 Mounting: Rotofast Mounting System



DIAGRAM Example





Custom Fabricated Fiber-Optic Acoustical Panels

For the best in beauty, acoustical performance and convenience.

- Prepackaged, prefabricated standard acoustical panels with fiber-optic stars, ships ready to install
- Reduces sound reflections by adding absorption to the ceiling
- Fast delivery and cost-effective installation
- Easy connectivity with LED technology
- Low power consumption
- Each panel has a built-in star engine and can be daisy-chained.
- 1" thick panels, for flush-mounting to ceiling
- Fabric: Guilford Anchorage – FR701 Black or Midnight Blue
- Edges: Square
- Mounting: Rotofast Anchors
- Class A, fire-rated 6# fiberglass

Fiber-Optic Acoustical Panels for a Grid Ceiling

Turn your grid ceiling into a thing of beauty – economically and easily

- Standard sizes for lay-in grid ceilings
- Economical
- Easy installation
- Easy connectivity with LED technology and low power consumption
- Fast and convenient delivery in six-panel master-packs

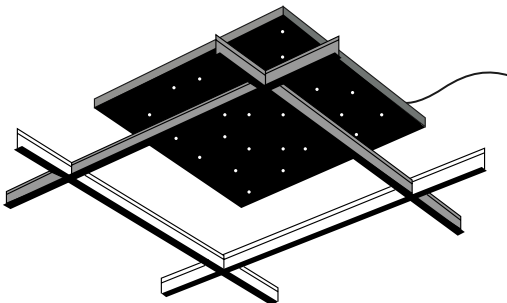
Available in 2' x 2' and 2' x 4' sizes

24" x 24"

24" x 48"

1" thick, 3# fiberglass

- Standard Fabric: FR701 Black or Midnight Blue
- Custom fabric and sizes are available for our star panels. Please contact our customer service department for more details.



Client-provided standard ceiling grid system

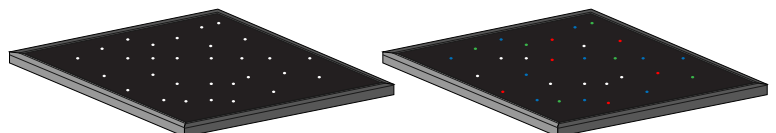
SPECIFICATION STANDARD PANEL CHART (POWER CHART)

- Each panel draws 0.7amps max per panel.

Note: Some panels will come with a shooting star effect, which contain one (1) extra Starry Night Panel Board light source and will increase the panel another 0.7Amps.

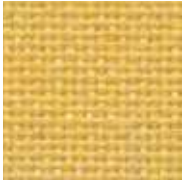
POWER SUPPLY	NO. OF PANELS
25W @ 12V	4 panels
50W @ 12V	8 panels
75W @ 12V	16 panels
100W @ 12V	32 panels

POWER SUPPLY	NO. OF PANELS
25W @ 24V	8 panels
50W @ 24V	16 panels
75W @ 24V	32 panels
100W @ 24V	64 panels



Lighting - cool daylight
Lighting - RGBW: Color Changing

Guilford of Maine FR701 Acoustic Fabric



Yellow
744



Chartreuse
734



Fir
743



Leaf
755



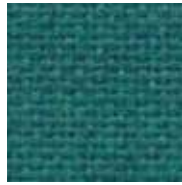
Dune
749



Sunshine
797



Lime
721



Teal
742



Green Neutral
402



Stream
757



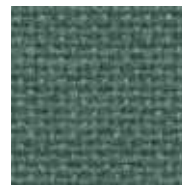
Orange
746



Sky
740



Sapphire
745



Blue Spruce
467



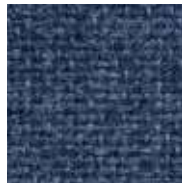
Verte Papier
561



Cardinal
738



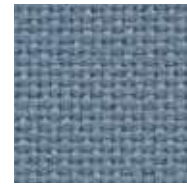
Cobalt
420



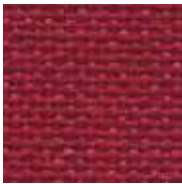
Baltic
153



Wedgewood
150



Bayberry
486



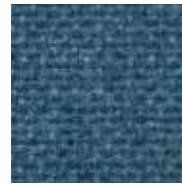
Red
799



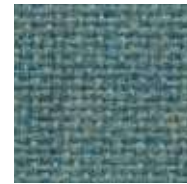
Iris
798



Blue Plum
553



Ultramarine
470



Aquamarine
381



Claret Accent
418



Deep Burgundy
556



Black
408



Chocolate
793



Medium Grey
298

Guilford of Maine FR701 Acoustic Fabric



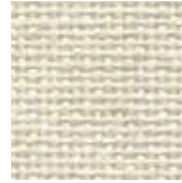
Wheat
130



Bone
748



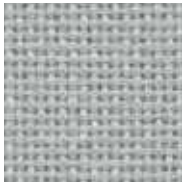
Buff
460



Eggshell
144



White
224



Eucalyptus
468



Desert Sand
758



Apricot Neutral
404



Quartz
380



Pearl
481



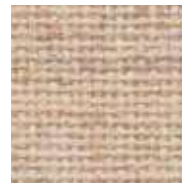
Blue Papier
539



Coin
794



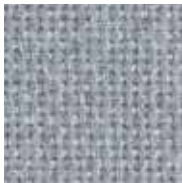
Cherry Neutral
400



Vanilla Neutral
403



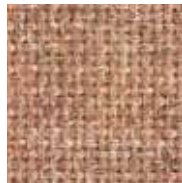
Opal
394



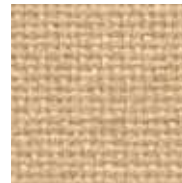
Crystal Blue
175



Blue Neutral
401



Cinnabar
422



Straw
747



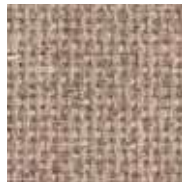
Silver Papier
538



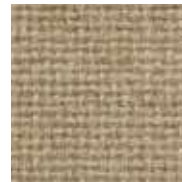
Steel Grey
471



Grey Mix
238



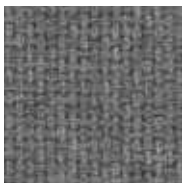
Pumice
423



Light Moss
754



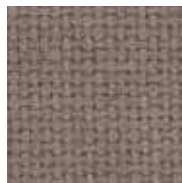
Cement Mix
750



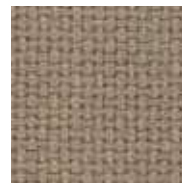
Flannel
795



Amethyst
424



Moleskin
796



Earth
792



Silver Neutral
406

While we make every effort to make sure the colors you see here are accurate, colors may vary depending on your screen resolution and settings. Samples may be requested through the website.

Guilford of Maine FR701 Acoustic Fabric

Specifications

Content

100% post-consumer recycled polyester

Weight

16.0 ± 0.5 oz./lin. yd.

Width

66" min. useable


Repeat

none


Cleaning Code


Standard Care Label W-S. Clean with water based cleaning agents, foam or pure, water free solvents. Vacuuming or light brushing is recommended to prevent dust and soil buildup.

Performance

 **Colorfastness to Light (AATCC 16 Option 3)**
Grade 4 min. at 40 hours

 **Colorfastness to Crocking (AATCC 8)**
Grade 4 min. dry & Grade 3 min. wet

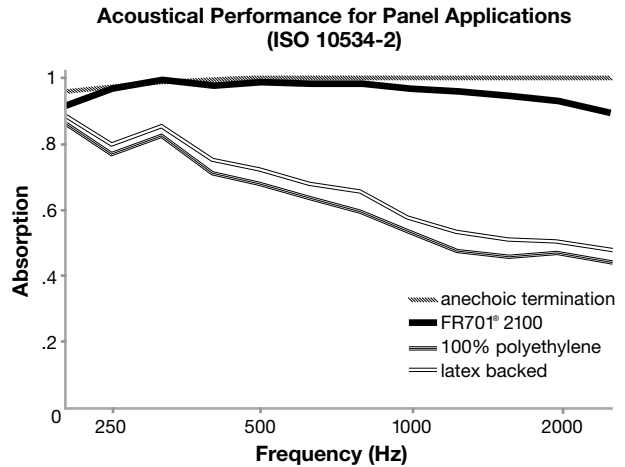
 **Breaking Strength (ASTM D5034)**
150 lbf min. warp and fill

 **Flammability (ASTM E84)**
Class I or A

*ACT® registered certification marks.

Acoustical Performance

The plot below summarizes impedance tube measurements of absorption of an anechoic termination and various fabrics in front of the anechoic termination.



NRC of anechoic termination
1.00

NRC of fabric in front of anechoic termination
.95

Miscellaneous

Every effort has been made to ensure color accuracy of the digital images, however, please order a sample before specification. Application testing of this product is recommended. Colors may vary between dye lots. This is a non-directional fabric.

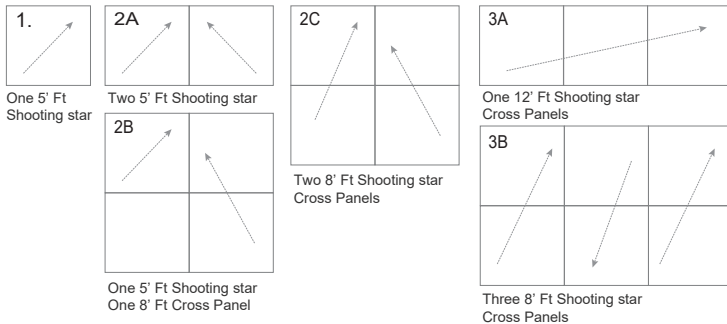
Proudly woven in the USA supporting our local communities.



ORDERING INFORMATION

<u>PRODUCT</u>	<u>PANEL SIZES</u>	<u>PANEL QUANTITY</u>	<u>SHOOTING STAR</u>	<u>NO. OF SHOOTING STAR</u>
FS - A- STARRY NIGHT WHITE	<input type="checkbox"/> 2ft x 2ft <input type="checkbox"/> 2ft x 4ft <input type="checkbox"/> 4ft x 4ft	NUMBER OF PANELS _____	<input type="checkbox"/> 5 FT <input type="checkbox"/> 8 FT - CROSS PANEL 2 PANELS <input type="checkbox"/> 12 FT - CROSS PANEL 3 PANELS <input type="checkbox"/> NONE	<input type="checkbox"/> 1 <input type="checkbox"/> 2 <input type="checkbox"/> 3 <input type="checkbox"/> NONE
FS - A- STARRY NIGHT RGBW	<input type="checkbox"/> 4ft x 6ft <input type="checkbox"/> 4ft x 8ft			
	<input type="checkbox"/> CUSTOM _____ <small>(Please Specify - No larger than 4x8. For custom radius cuts please send in dimensions and or a template.)</small>			

SHOOTING STAR CONFIGURATION



CONSTELLATION

WITH _____
(Please specify Type)

CUSTOM _____
(Please specify quantity)

None

EFFECTS

METEOR
 FIREWORKS
 MILKY WAY
 LED WHITE COVE LIGHTING
(Please Specify Length)
 LED RGB COVE LIGHTING (Please Specify Length)
 COVE RGBW LIGHTING (Please Specify Length)
 LED MINI LIGHTS WHITE DOWNLIGHTS
(Please Specify Amount on Panel)
 LED MINI LIGHTS RGBW DOWNLIGHTS
(Please Specify Amount on Panel)

FABRIC

BLACK BALTIC BLUE
 CUSTOM
(Please contact us for additional fabric swatch
colors. see chart on page 3 and 4)

AMBIENT LIGHT COLOR

RGB WW NW
 RGBW CW NONE

AMBIENT LIGHT

ON PEIMETER OF PANELS
 PERIMETER OF MOULDING
 NONE

POWER SUPPLY (12 -24V)

25W 50W 75W
 100W 150W
 CUSTOM _____
(Please specify voltage and
wattage)

QUANTITY _____
(Pease specify number of
transformers)

AMPLIFIERS (If needed)

(Please specify for ambient light)
 None

MOUNTING

SURFACE MOUNT
(Standard rotofast system)
 FLOATING /SUSPENDED
(Standard cloud anchor system)
 CUSTOM _____
(Please specify)

CONTROL

WiFi RS232
 BLUETOOTH DMX
 STANDALONE
 RS232 - WIRELESS

